

# MODEL 39 FROZEN FOOD GLASS FRONT MERCHANDISER ILLUSTRATED PARTS MANUAL

L0098, REV. C

AUTOMATED MERCHANDISING SYSTEMS INC  
255 WEST BURR BLVD.  
KEARNEYSVILLE, WV 25430  
304-725-6921 - Fax 304-725-6983

[info@amsvendors.com](mailto:info@amsvendors.com)  
[www.amsvendors.com](http://www.amsvendors.com)

INTERNATIONAL A.M.S. S DE RL DE CV  
KM. 9 CARR. AL CASTILLO NO. 8200  
MPIO. DE EL SALTO, JAL. MEXICO 45680  
5233-3-6-88-07-17 - Fax 5233-3-6-88-13-14

[www.amsint.com.mx](http://www.amsint.com.mx)  
[servicio@amsint.com.mx](mailto:servicio@amsint.com.mx)



---

AMS Glass Front Merchandiser  
Model 39-FROZEN FOOD  
Illustrated Parts Manual

Table of Contents

<u>SECTION</u>	<u>PAGE</u>
<b>INTRODUCTION</b>	
Table of Contents	3
General Introduction	5
Manual Organization	5
Merchandiser Identification	6
Patent Disclosure	7
Publication Notice	7
<b>CABINET DOOR</b>	8
<b>HOPPER</b>	12
<b>CABINET</b>	14
<b>RIGHT RAIL MOUNT</b>	18
<b>CHILLER</b>	22
<b>STANDARD TRAY</b>	26
<b>SCROLLING PRICE TRAY</b>	28
<b>CONDENSER FILTER COVER</b>	30
<b>POS DISPLAY</b>	32
<b>ELECTRICAL HARNESSSES</b>	34
<b>HELIXES</b>	54



---

## GENERAL INTRODUCTION

The purpose of this manual is to give our customers a way of identifying major service parts for repair and replacement. The illustrations and parts list in this manual are for identification only. Some optional parts are also shown.

Illustrations of these major parts are keyed with our part numbers. The illustrations help identify the general design, position and orientation of these parts. The note section may also give important information.

Please refer to the section on merchandiser identification on the following pages. Without the model style and serial number it may be difficult to identify the required part.

Parts should be ordered from your distributor.

It is our intent to assist our customers with up-to-date documentation. However, this manual may not show all parts, variations or changes. Some parts may be shown out of scale. This manual is itself subject to change without notice. If any errors are found, please notify AMS so the correction can be included in later revisions. Engineering data and third party information are generally not included. The graphical data, group assembly data, parts, part assembly, parts breakout information and tabular data conveyed by this manual is proprietary and belongs to AMS, and holders without prior consent of or without knowledge of and by AMS must surrender this data immediately.

All measurements are in inches except where specified as Metric.

## MANUAL ORGANIZATION

This manual is divided into general sections. Each section is further divided into the various subsections or subassemblies. These lead off with one or more illustrations showing the parts and each part is identified with a number. Note that some part numbers are for assemblies fabricated as a unit at AMS and are replaceable only as a unit. Also, other part numbers identify optional parts which may or may not have been contracted for and factory installed by AMS.

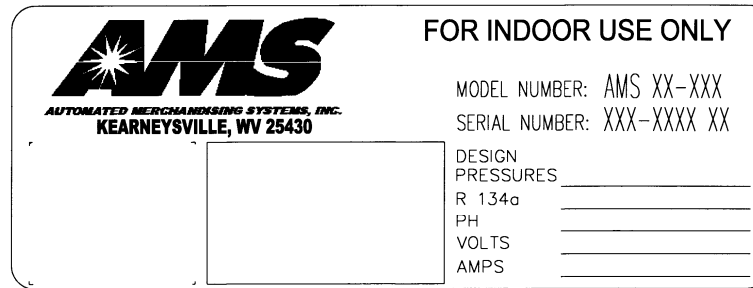
The part number in the illustration is listed with the description or title for that part. In some instances there may be multiple parts to choose from. The correct service or repair part for the style of merchandiser must be selected.

There is a note section where additional information may be found.

This manual contains additional and new information for a vendor as currently manufactured. Older revisions of this manual should be kept with older vendors.

### MERCHANDISER IDENTIFICATION

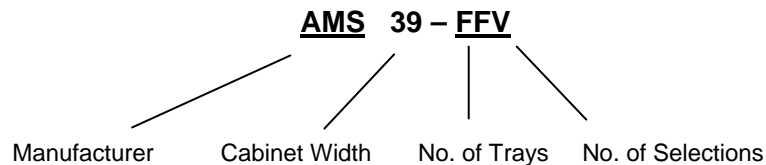
When requesting service, replacement parts or technical assistance, please use the **Model Number** and the **Serial Number with Date Code**, found on the Serial Plate (Refer to Figure 1) affixed to the merchandiser. The plate is usually located inside the window. The information contained on this plate is necessary to determine what parts, kits, or maintenance apply to your vendor.



72-002 Serial Plate

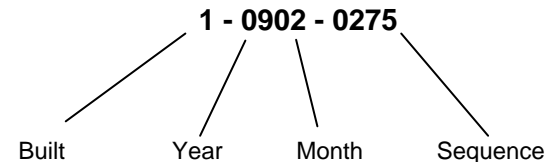
Figure 1. Example of Typical Serial Plate

#### Example of Model Number Breakdown



**Example:** AMS39-FFV means this vendor is an Automated Merchandising Systems merchandiser, 39" wide, Frozen Food Vendor.

#### Example of Serial Number and Date Code Breakdown



**Example:** 1-0902-0275 is translated as U.S. built (1), manufactured in 2009, month of February, and was the 275<sup>th</sup> manufactured that year.

*Note:* Manufactured in Mexico, Built = (2)

---

## **PATENT DISCLOSURE**

This merchandiser and/or certain of its components are covered by one or more of the following U.S. and international patents;

U.S. PATENTS: 6,041,962; 6,145,699; 6,202,888; 6,384,402; 6,520,373; 6,708,079; 6,794,634; 7,191,915; 7,246,719; 7,343,220 B2; 7,446,302; 7,742,837.

CANADIAN PATENT 2,329,314.

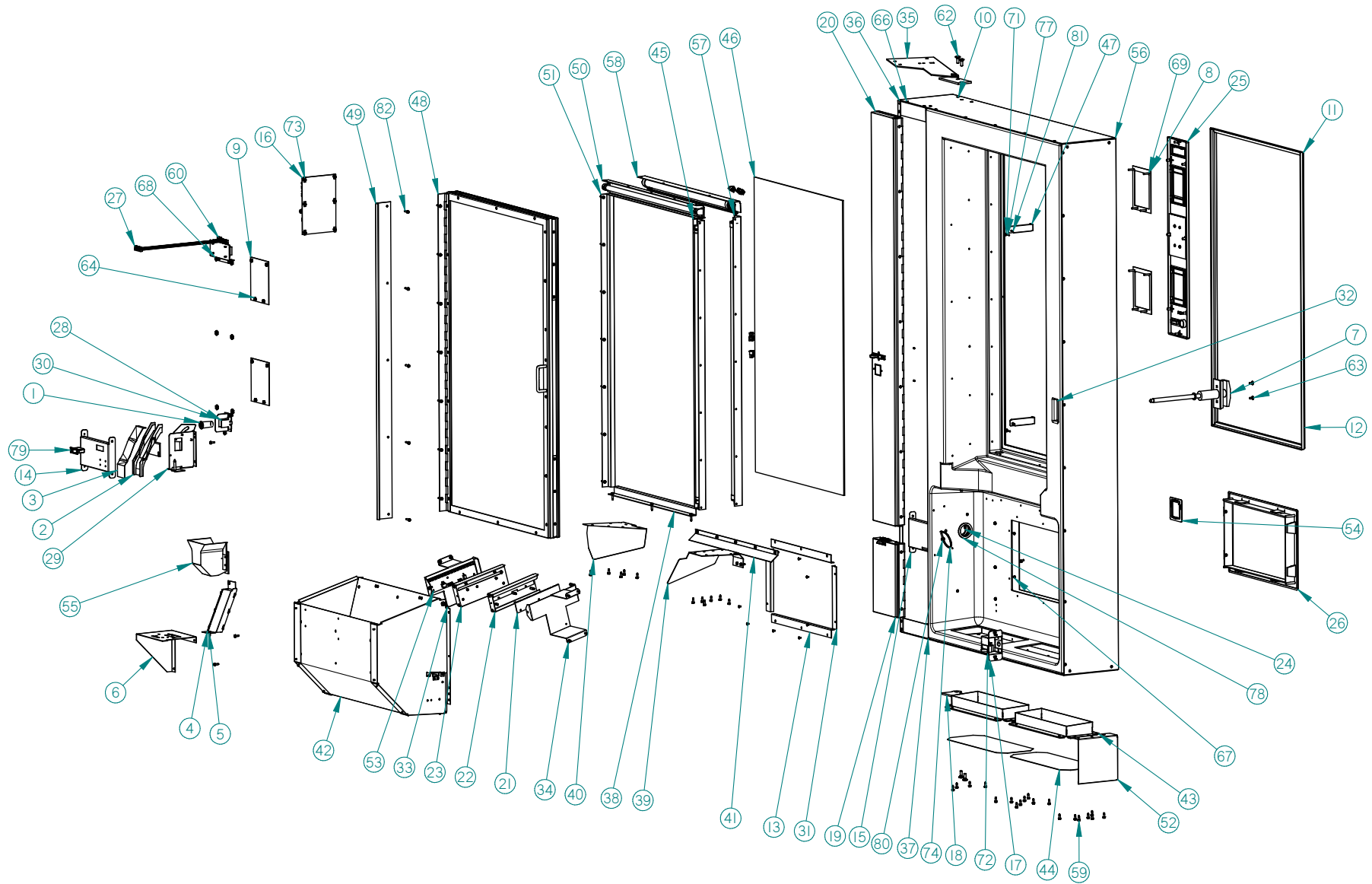
MEXICO PATENT 230714.

## **PUBLICATION NOTICE**

L0098, Revision B, ECN 2435, 07/16/2010

It is our intent to assist our customers with up-to-date documentation: however, this manual may not contain all updates and is subject to revision without notice. Please contact our Service Department with your requests or comments.

### CABINET DOOR ILLUSTRATION





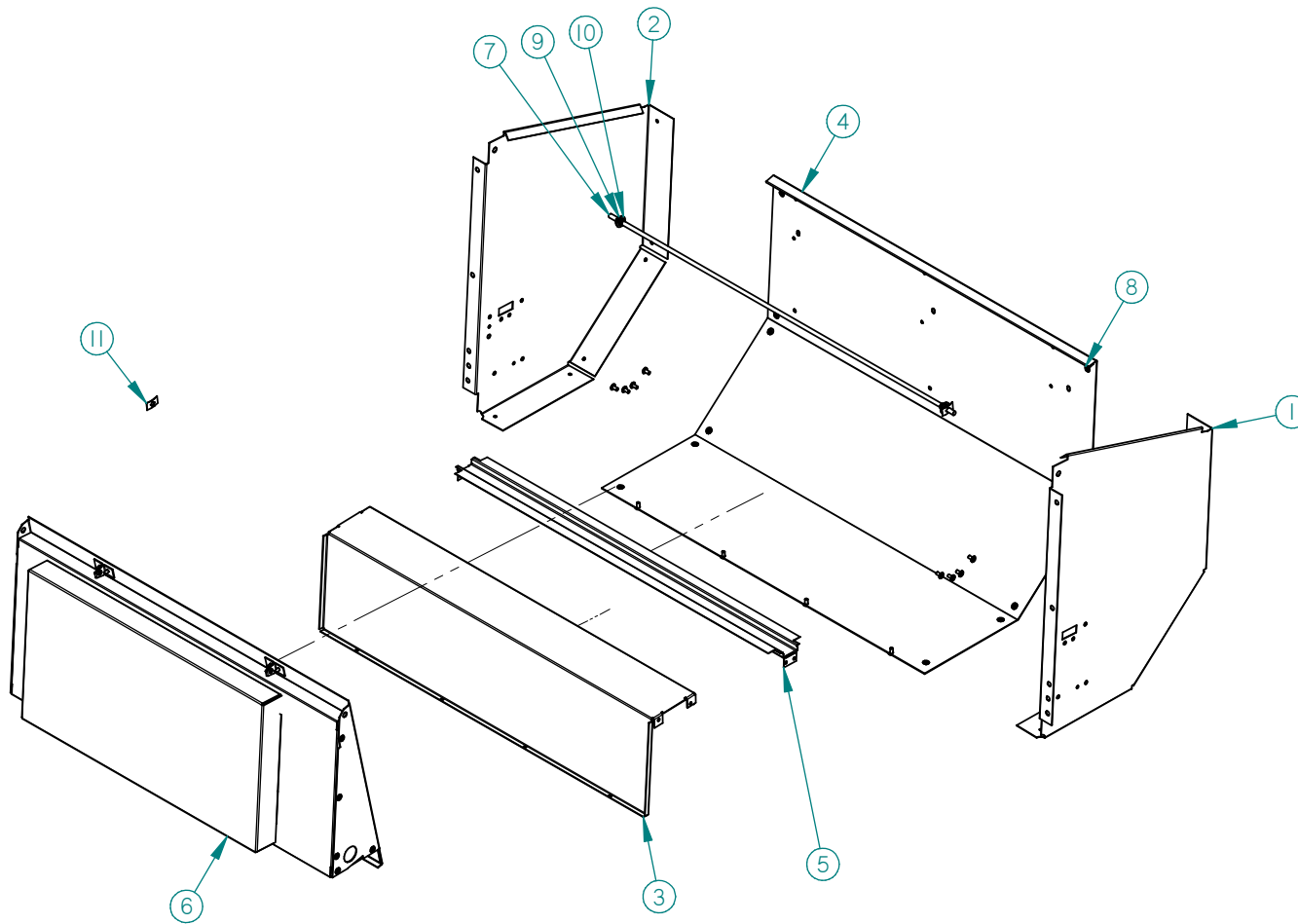
CABINET DOOR PARTS LIST

ITEM	PART NO.	PART DESCRIPTION	NOTES
1	20081	SCAVENGER BUTTON	
2	20099	COIN CHUTE, INSERT	
3	20100	COIN CHUTE COVER	
4	20110	COIN CHUTE / COIN BOX, FRONT	
5	20111	COIN CHUTE / COIN BOX, BACK	
6	20129	COIN BOX BULKHEAD	
7	20130	T-HANDLE ASSEMBLY	
8	20180	DBV MOUNTING BEZEL	
9	20181	DBV COVER PLATE	
10	20206	HINGE, WASHER PLATE	
11	20330-07	TRIM, EXTRUDED EDGE, FFV, HORIZ.	
12	20330-08	TRIM, EXTRUDED EDGE, FFV, VERT.	
13	20401	RETAINER, HORIZ. EYELET (35")	
14	20845	DOOR STIFFENER, UPPER, LOW TEMP	
15	20846	DOOR STIFFENER, LOWER, LOW TEMP	
16	23021	CONTROL BOARD, SENSIT III	
17	21690	ENCLOSURE, DOOR SWITCH, VER 2	
18	21704	ASSEMBLY, BOTTOM HINGE, 3/16"	
19	22003	ASSEMBLY, LOWER COIN DOOR, LOW TEMP	
20	22004	ASSEMBLY, UPPER COIN DOOR, LOW TEMP	
21	24343	SENSOR BOARD, SECONDARY, VER 4	
22	22128	ASSEMBLY, SECONDARY DELIVERY SENSOR COVER	
23	22130	ASSEMBLY, PRIMARY DELIVERY SENSOR COVER	
24	22171	MOUNTING PANEL, CHANGER, MULTI-USE	
25	22176	ASSEMBLY, PLASTIC ESCUTCHEON VERSION 2	
26	22238	TRIM, VEND EYELET, 14 X 75 PUSH PLATE	

27	22305	ASSEMBLY, DISPLAY, VER. 2 ESCUTCHEON	
28	22335	BRACKET, PUSH BUTTON ALIGNMENT	
29	22343	ASSEMBLY, SCAVENGER SYSTEM, VER 2	
30	22367	SCAVENGER STOP BRACKET, VER 2	
31	22381	RETAINER, VERT. EYELET	
32	22403	CONDUIT, LOCK BOLT FOAM	
33	22439	BRACKET, PRIMARY DELIVERY SENSOR	
34	22440	BRACKET, SECONDARY DELIVERY SENSOR	
35	22484	ASSEMBLY, TOP HINGE, FFV	
36	22535	PLATE, RIGHT RAIL MOUNT DOOR SEAL, UPPER	
37	22535-01	PLATE, RIGHT RAIL MOUNT DOOR SEAL, LOWER	
38	22586	RETAINER, GLASS WINDOW, BOTTOM, FFV	
39	22588	KICKER, DOOR, LEFT, FFV	
40	22590	KICKER, DOOR, RIGHT, FFV	
41	22592	KICKER, FRONT, FFV	
42	22631	ASSEMBLY, VEND HOPPER W/ WIREWAY	
43	22646	TRIM, DOOR BOTTOM CHILLER HOLE, FFV	
44	22647	SCREEN, FRONT CHILLER HOLE	
45	22692	ASSEMBLY, VERTICAL LIGHT AND WINDOW BRACKETS	
46	22693	WINDOW, GLASS, SINGLE PANE, 1/8 THK	
47	22712	LATCH, WINDOW	
48	22713	ASSEMBLY, WINDOW, FFV	
49	22726	TRAY RESTRAINT, FFV	
50	23022	ASSEMBLY, HORIZONTAL LIGHT & WINDOW BRACKET	
51	23025	RETAINER, GLASS WINDOW, LEFT SIDE	
52	23259	ASSEMBLY, FALSE LEG	
53	24342	SENSOR BOARD, PRIMARY, VER 4	
54	23372	TRIM, PLASTIC COIN CUP	
55	23373	ASSEMBLY, PLASTIC COIN CUP	

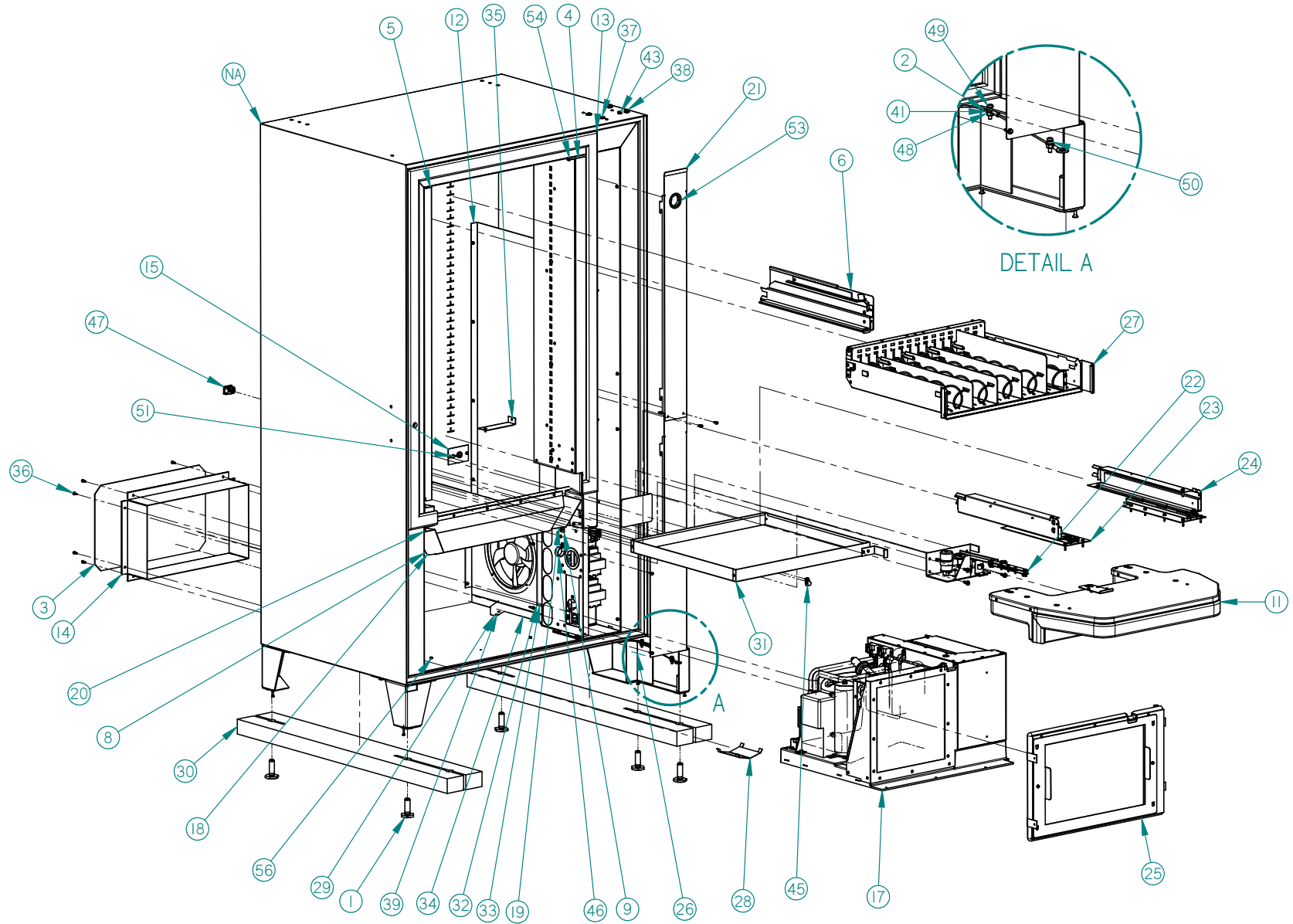
56	23560	ASSEMBLY, FOAMED DOOR	
57	23670	ASSEMBLY, 34" LED AND WINDOW RETAINER	OPTIONAL ITEM
58	23671	ASSEMBLY, 21" LED AND WINDOW BRACKET	OPTIONAL ITEM
59	3000	SCREW, SHEET METAL TEK – 8-18	
60	3001-03	SCREW, SHEET METAL, TYPE F, 3/8"	
61	3002-03	SCREW, MACHINE, TYPE F, 1/2"	
62	3004-06	CARRIAGE BOLT, ¼ - 20 X ¾	
63	3005-04	CARRIAGE BOLT, #10-24	
64	3006-08	#8-32 HEX NUT	
65	3006-10	#10-24 HEX HUT	
66	3009-02	RIVET, STEEL, 1/8", BLACK, ¼"	
67	3009-04	RIVET, STEEL 1/8", BLACK, 3/8"	
68	3011	SELF THREADING NUT, ¼" STUD	
69	3014-14	#8-32 X .875 TYPE FH PEM STUD	
70	3015-12	NYLINER BEARING	
71	3017-05	WASHER, FLAT STEEL, SAE STD	
72	3036	SWITCH, PANEL MOUNT ROCKER	
73	3037-01	PC BOARD SUPPORT	
74	3070-07	CABLE TIE, 30 LB.	
75	3081	WIRE TIE, .25 PANEL MOUNT	
76	3153-11	NUT, HEX WITH LOCK WASHER	
77	3156-10	RIVET, ALUMINUM, 1/8", NATURAL	
78	3205-24	GROMMET	
79	3226-02	CATCH, SLAM ACTION LATCH	
80	3292	FLAT TIE HOLDER, BLIND HOLE	
81	3341-06	RIVET, STEEL, 1/8" X ½" ZINC PLATED	
82	3342-06	SCREW, SHEET METAL TEK #8-18	

HOPPER PARTS ILLUSTRATION



<b>HOPPER PARTS LIST</b>			
<b>ITEM</b>	<b>PART NO.</b>	<b>PART DESCRIPTION</b>	<b>NOTES</b>
1	21544	HOPPER END, 1 ½ CU. FT. HOPPER	
2	21544-01	HOPPER END, 1 ½ CU. FT. HOPPER	
3	22538	HOPPER FRONT, 1 ¼ CU. FT. HOPPER	
4	22540	HOPPER BACK, 1 ¼ CU. FT. HOPPER	
5	22630	WIREWAY, EMITTER/ DETECTOR HARNESS, SENSIT II	
6	23062	ASSEMBLY, VEND DOOR, 1 ¼ CU. FT. HOPPER	
7	23068	VEND DOOR, SHAFT (39")	
8	3009-02	RIVET, STEEL, 1/8", BLACK	
9	3015	BEARING, NYLINER SNAP-IN	
10	3017-10	WASHER, FLAT STEEL, SAE STD.	
11	3113	3/16" TINNEMAN FASTENER	

CABINET PARTS ILLUSTRATION



CABINET PARTS LIST

ITEM	PART NO.	PART DESCRIPTION	NOTES
1	20121	LEG, LEVELING	
2	20277	CABLE ASSEMBLY, DOOR STOP	
3	20279	SCREEN, REAR CHILLER HOLE, 4 MESH	
4	22256	ASSEMBLY, RIGHT RAIL MOUNT	
5	22271	RAIL MOUNT, LEFT VERTICAL	
6	22291	ASSEMBLY, TRAY RAIL, RH	
7	22291-01	ASSEMBLY, TRAY RAIL, LH	NOT SHOWN
8	22297	ASSEMBLY, BULKHEAD, HORIZONTAL	
9	22298	BRACKET, BULKHEAD MOUNTING	
10			NOT USED
11	22435	ASSEMBLY, SLIDING DOOR	
12	22528	EVAPORATOR PLENUM	
13	22574	GASKET, CABINET	
14	22601	TRIM, REAR CHILLER HOLE	
15	22602	COVER, IEC INLET	
16	22603	RAIL, TRAY SOCKET MOUNTING	NOT SHOWN
17	22607	ASSEMBLY, CHILLER UNIT	
18	22612	KICKER, CABINET, LEFT	
19	22613	LICKER, CABINET, RIGHT	
20	22615	WEDGE, LEFT SIDE CABINET	
21	22651	TOP COVER PANEL	
22	22654	ASSEMBLY, SLIDING DOOR MOTOR AND LINKAGES	
23	22660	ASSEMBLY, MOUNTING BRACKET, THIN TRAY, LH	
24	22660-01	ASSEMBLY, MOUNTING BEACKET, THIN TRAY, RH	
25	22674	ASSEMBLY, CHILLER COVER	
26	22951	BOTTOM COVER PANEL	
27	22999	ASSEMBLY, TRAY	OPTIONAL TRAY ASSEMBLY 23832
28	23057	WEDGE, CHILLER ALIGNMENT	
29	23058	GUIDE, CHILLER ALIGNMENT	
30	23231	SHIPPING BOARD	
31	23253	ASSEMBLY, THIN TRAY	

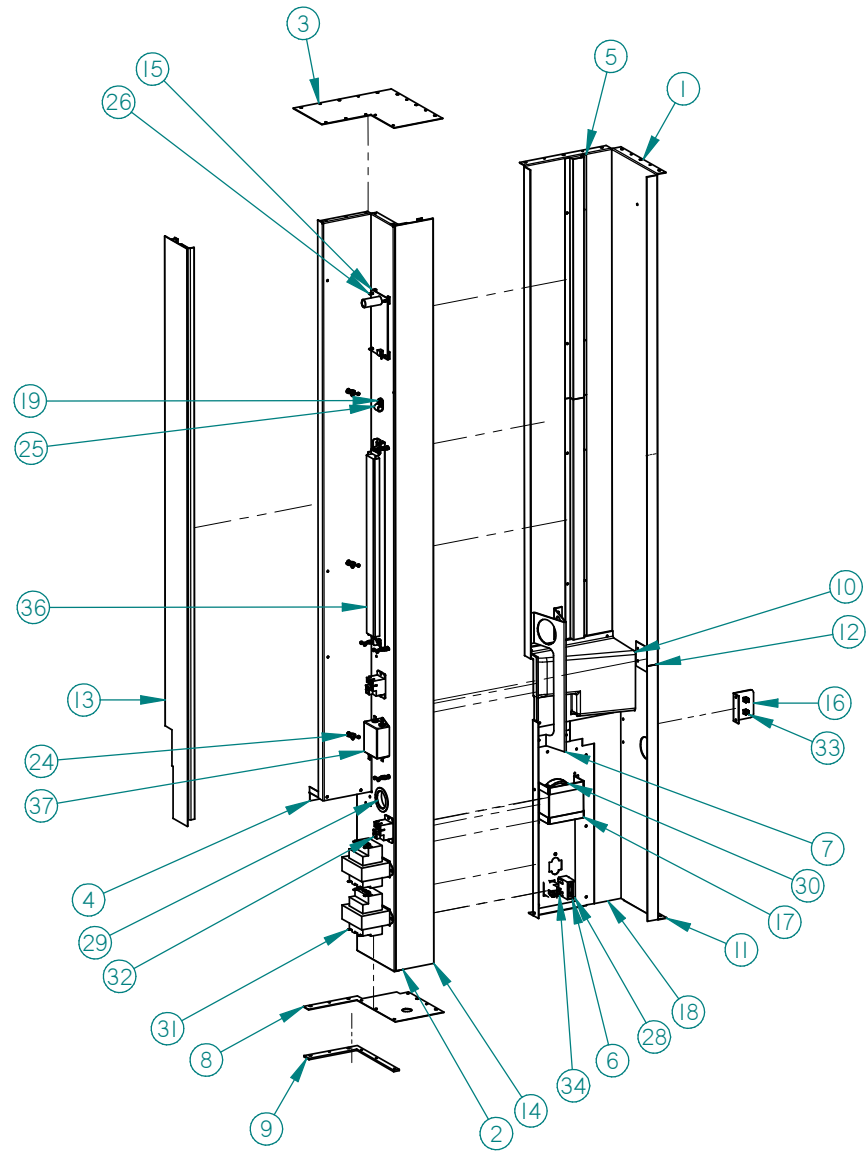
32	23255	ASSEMBLY, FAN SHROUD, 120V	CHECK UNIT VOLTAGE
	23255-01	ASSEMBLY, FAN SHROUD, 220V	
33	23256	FOAM PANEL, EVAPERATOR FAN SPACING	
34	23257	FOAM PANEL, EVAPERATOR FAN SPACING W/CUTOUT	
35	23413	BRACKET, MOTOR WIRE BARRIER	
36	3000	SCREW, SHEET METAL TEK – 8-18	
37	3004-06	CARRIAGE BOLT, 1/4-20 X 3/4	
38	3007-06	SCREW, 5/16-18, TYPE F	
39	3009-04	RIVET, POP, STEEL 1/8	
40	3017-05	WASHER, #5 FLAT, STEEL, SAE STD	NOT SHOWN
41	3017-10	WASHER, #10 FLAT, STEEL, SAE STD	
42	3017-13	WASHER, #1/4 FLAT, STEEL, SAE STD	NOT SHOWN
43	3018-06	SCREW, SHEET METAL TEK – 8-18	
44	3023-15	WASHER, FLAT NYLON (1/2")	NOT SHOWN
45	3024-06	CABLE CLAMP 3/8" DIA, BLACK NYLON	
46	3024-16	CABLE CLAMP, 1" DIA, BLACK NYLON	
47	3057	INLET, PANEL MOUNT, IEC	
48	3060-10	NUT, SELF-LOCKING, MACHINE 10-32	
49	3061-06	SCREW, MACHINE, TYPE F, 10-32 X .75	
50	3067	SPACER	
51	3080	STRAIN RELIEF, BUTTON LOCK	
52	3153-11	NUT, HEX WITH LOCK WASHER	
53	3205-24	GROMMET	
54	3251-06	#12 X 3/4" HEX WASHER TEK SCREW	
55	3342-04	SCREW, SHEET METAL TEK – 8-18	NOT SHOWN
56	3342-06	SCREW, SHEET METAL TEK #8-18	



---

THIS PAGE INTENTIONALLY LEFT BLANK

RIGHT RAIL MOUNT PARTS ILLUSTRATION



RIGHT RAIL MOUNT PARTS LIST			
ITEM	PART NO.	PART DESCRIPTION	NOTES
1	22257	TOP, COLD SIDE PANEL	
2	22258	WARM SIDE PANEL	
3	22259	TOP PLATE	
4	22260	CAP PLATE	
5	22270	SEAL PANEL	
6	22513	PLATE, FUSE HOLDER	
7	22543	GAP SUPPORT	
8	22563	BOTTOM PLATE	
9	22611	SPACER, BOTTOM	
10	22616	WEDGE	
11	22626	BOTTOM, COLD SIDE PANEL	
12	22627	PLATE, SPLICE	
13	22634	FRONT SEAL	
14	22635	SIDE SEAL	
15	22641	INTERFACE BOARD (FFIB)	
16	22681	BRACKET, TEMP BROBE	
17	22703	ELECTRICAL HOLE COVER	
18	23094	THERMAL BREAK	
19	3000	SCREW, SHEET METAL TEK – 8-18	
20	3006-08	NUT, HEX, #8-32	NOT SHOWN
21	3009-02	RIVET, STEEL, 1/8", BLACK	NOT SHOWN
22	3009-04	RIVET, STEEL 1/8	NOT SHOWN
23	3017-10	WASHER, #10 FLAT, STEEL, SAE STD	NOT SHOWN
24	3020	WIRE TIE, STANDOFF	
25	3024-06	CABLE CLAMP, 3/8" DIA	
26	3037-01	PC BOARD SUPPORT	
27	3084-09	SCREW, 8-32 PAN HEAD, 1.25 LG	NOT SHOWN
28	3133-30	ASSEMBLY, FUSE HOLDER AND FUSE	
29	3205-24	GROMMET, 1 3/4"	
30	3205-34	GROMMET, 2 1/2"	
31	3257	TRANSFORMER, 120 V	CHECK UNIT VOLTAGE
	3258	TRANSFORMER, 220 V	

---

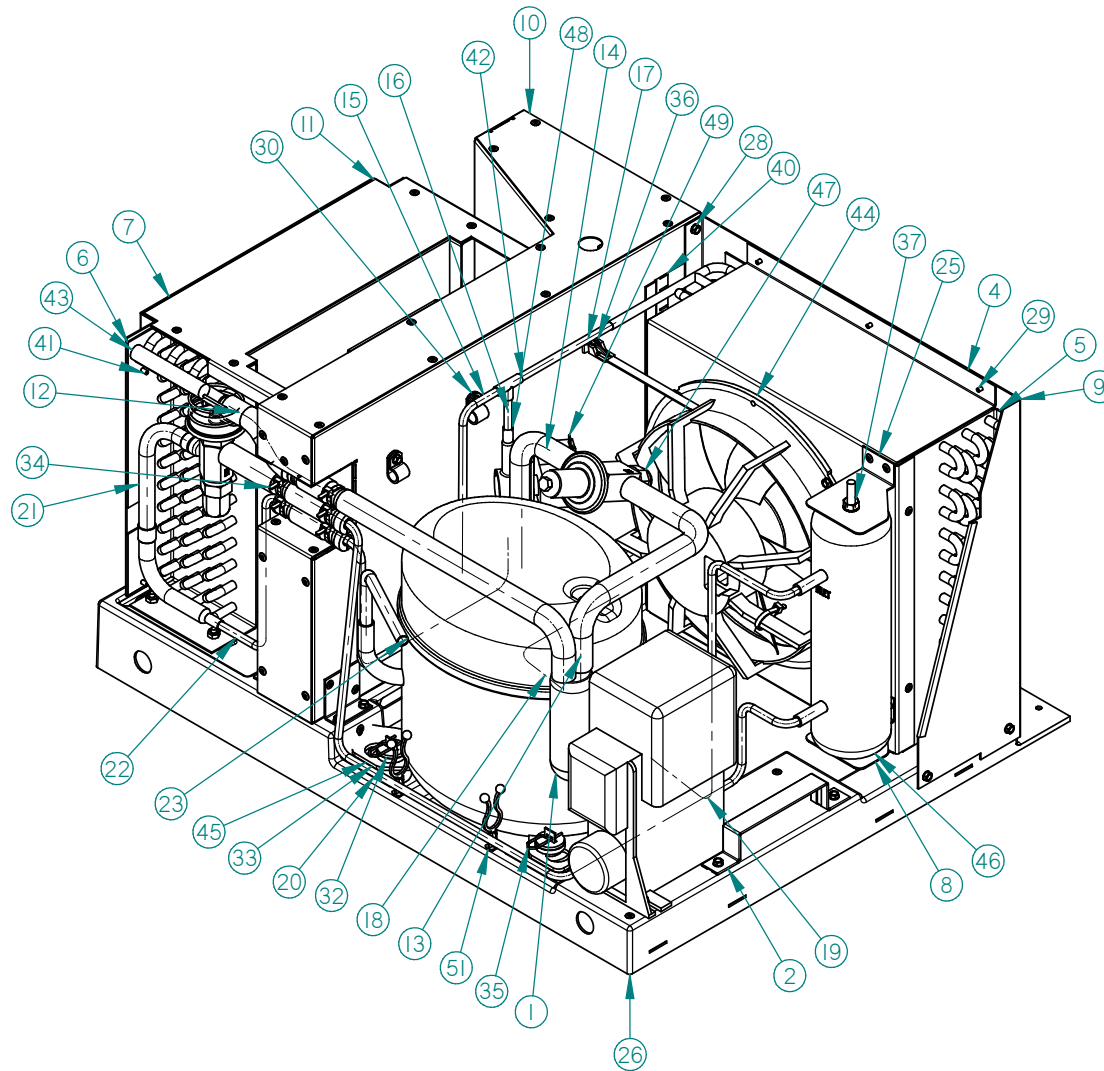
32	3274	RELAY, SINGLE POLE	
33	3282	CLIP, ¼ DIA	NOT SHOWN
34	3284	SWITCH, ROCKER, ON/OFF	
35	3341-02	RIVET, STEEL, 1/8", ZINC PLATED	
36	3451	BALLAST, DUAL LAMP	OPTIONAL ITEM (NOT USED WITH LED LIGHTS)
37	3627	FILTER, RFI, MEDICAL GRADE	

---

---

THIS PAGE INTENTIONALLY LEFT BLANK

### CHILLER ILLUSTRATION



CHILLER PARTS LIST

ITEM	PART NO.	PART DESCRIPTION	NOTE
1	20042	ACCUMULATOR	
2	20125	COIN BOX HANDLE	
3	22235	DRYER, 1" DIA	NOT SHOWN
4	22522	CONDENSER SHROUD	
5	22523	CONDENSER COIL	
6	22525	EVAPORATOR COIL	
7	22526	EVAPORATOR SHROUD	
8	22664	BRACKET, BOTTOM, MOUNTING, RECEIVER	
9	22665	SHROUD, CONDENSER	
10	22669	ASSEMBLY, VERTICAL BULKHEAD	
11	22952	BRACE, EVAPORATOR	
12	23111	TUBING, EVAPORATOR OUTLET TO ACCUMALATOR	
13	23112	TUBING ACCUMALATOR TO CPR	
14	23113	TUBING, CPR TO COMPRESSOR	
15	23114	TUBING, COMPRESSOR DISCHARGE TO BYPASS TEE	
16	23115	TUBING, BYPASS TEE TO SOLENOID	
17	23116	TUBING, BYPASS TEE TO CONDENSER	
18	23117	TUBING, CONDENSER OUTLET TO DRYER	
19	23118	TUBING, DRYER TO RECIEVER INLET	
20	23119	TUBING, RECIEVER OUTLET TO TXV INLET	
21	23120	TUBING, TXV OUTLET TO EVAPORATOR INLET	
22	23121	TUBING, SOLENOID OUTLET TO EVAP INLET	
23	23167	TUBING, PROCESS, LOW SIDE	
24	23183	VALVE, DRAIN FLAP	NOT SHOWN
25	23193	BRACKET, TOP, MOUNTING, RECEIVER	
26	23251	ASSEMBLY, BASEPLATE WITH TAP PLATES	
27	24194	COVER, RELAY	NOT SHOWN
28	3000	SCREW, SHEET METAL, TEK - 8-18	
29	3009-02	RIVET, STEEL, 1/8", BLACK	
30	3024-06	CABLE CLAMP, 3/8" DIA	
31	3060-08	NUT, #8-32 SELF LOCKING	

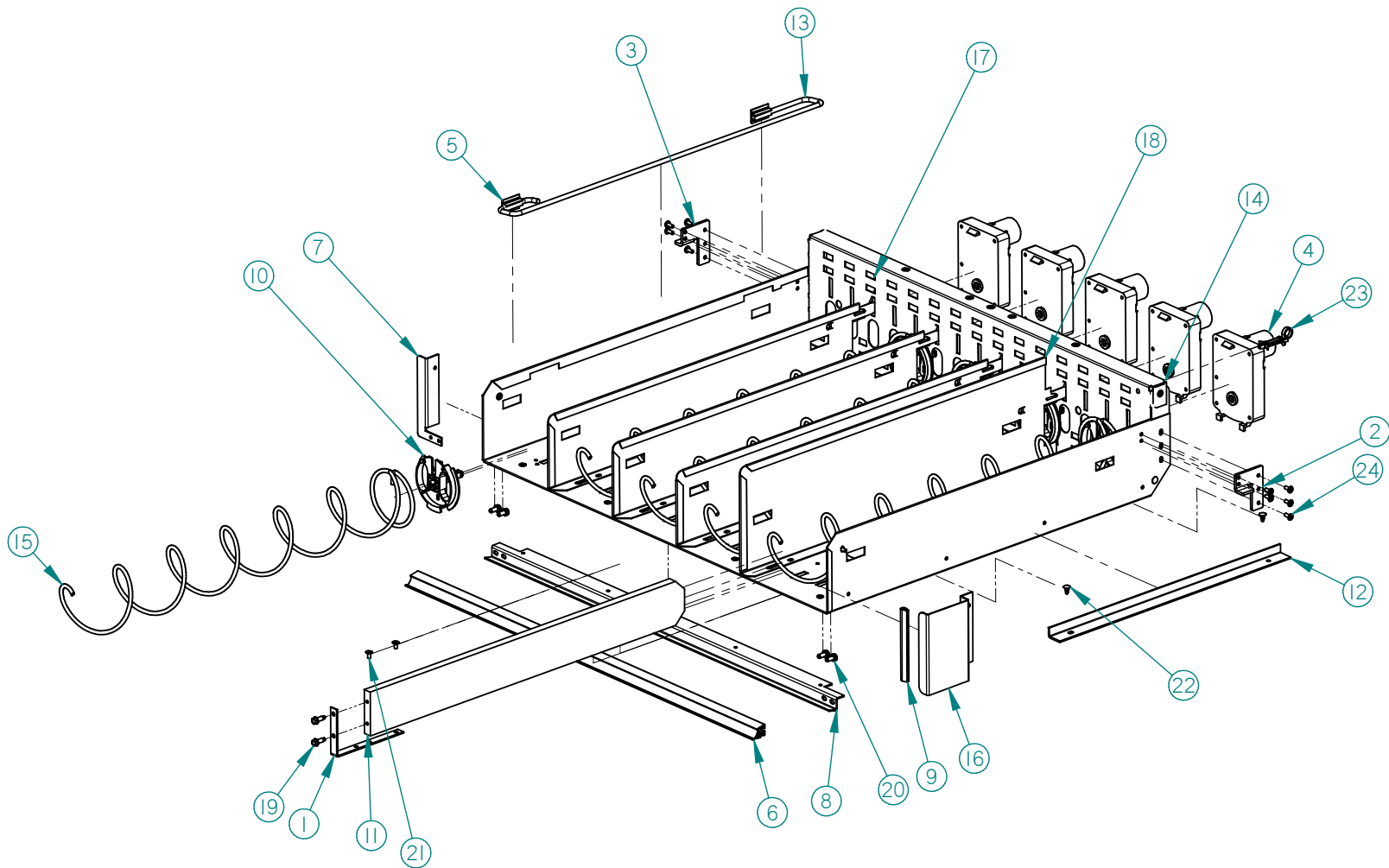
32	3068	GROMMET, PLASTIC	
33	3069	GROMMET, RUBBER	
34	3070-07	CABLE TIE	
35	3079	HAIR PIN	
36	3081	WIRE TIE PANEL MOUNT	
37	3153-11	NUT, HEX WITH LOCK WASHER	
38	3153-13	NUT, 3/8-16, HEX WITH LOCK WASHER	NOT SHOWN
39	3205-24	GROMMET	
40	3274	RELAY, REFRIGERATION	
41	3295-03	RIVET, STEEL, 1/8" PLATED	
42	3365	TEE, REFRIGERANT, 1/4" O.D. COPPER	
43	3395	THERMAL EXPANSION VALVE	
44	3424	FAN ASSEMBLY, 115 VAC	CHECK UNIT VOLTAGE
	3396-01	FAN ASSEMBLY, 230 VAC	
45	3398	COMPRESSOR, 3/4 H.P. 115 VAC	CHECK UNIT VOLTAGE
	3629	COMPRESSOR, 3/4 H.P. 220 VAC	
46	3422	RECEIVER, CHILLER	
47	3443	CPR VALVE	
48	3444	VALVE, SOLENOID	
49	3445	COIL, SOLENOID, 120 VAC	NOT SHOWN
	3445-01	COIL, SOLENOID, 220 VAC	
50	3446	REDUCER 1/2" O.D. TO 3/8" I.D.	NOT SHOWN
51	3529-12	STANDOFF, WIRE HARNESS	



---

THIS PAGE INTENTIONALLY LEFT BLANK

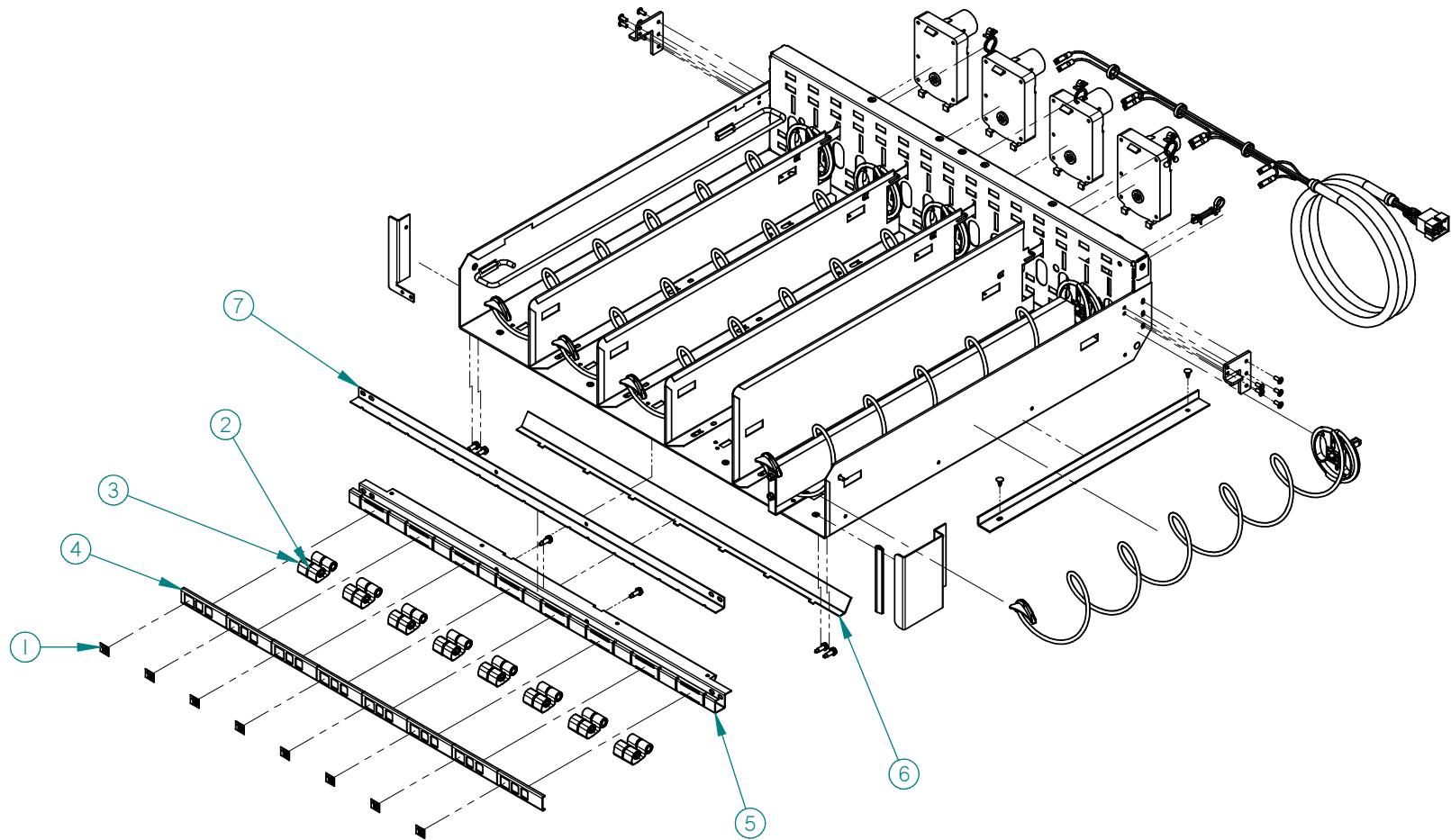
STANDARD TRAY ILLUSTRATION



STANDARD TRAY PARTS LIST

ITEM	PART NO.	PART DESCRIPTION	NOTE
1	20421	HELIX SPLITTER BRACKET	
2	20073	TRAY STOP	
3	20073-01	TRAY STOP, LH	
4	23007	MOTOR, WITH HOME CIRCUIT, CCW	OPTIONAL ITEM
	23007-01	MOTOR, WITH HOME CIRCUIT, CW	OPTIONAL ITEM
5	20220	EXTRUSION, CANDY PUSHER	
6	20465-02	EXTRUSION, PRICE MARKER	
7	20545-01	TRAY CORNER, VER 2 (L.H.)	
8	20643	TRAY DOUBLER, VER. 2 (35")	
9	20796-01	EDGE TRIM, TRAY CORNER	
10	20966	HELIX ADAPTOR, WITHOUT HUB	
11	22507	HELIX SPLITTER	
12	22508	HELIX ALIGNMENT DEVICE	OPTIONAL ITEM
13	22509	BAR, CANDY PUSHER	
14	22512	TRAY BODY, SNACK	
15	22518	HELIX, 3.75", COUNTER CLOCKWISE, PAINTED	SEE HELIX DESCRIPTION SECTION FOR OPTIONS
	22519	HELIX SMALL, COUNTER CLOCKWISE, PAINTED	
	22520	HELIX SMALL, CLOCKWISE, PAINTED	
	24060	HELIX, 1.5" COUNTER CLOCKWISE, PAINTED	ONE PER MINI DISPENSER KIT
16	22661	TRAY CORNER, VER. 2 (R.H.)	
17	23417	ASSEMBLY, TRAY DIVIDER, SHORT	OPTIONAL ITEM
18	23418	ASSEMBLY, TRAY DIVIDER, HIGH	OPTIONAL ITEM
19	3000	SCREW, SHEET METAL TEK – 8-18	
20	3001-03	SCREW, #8-18, SHEET METAL, TYPE B,	
21	3009-02	RIVET, STEEL, 1/8, BLACK	
22	3019	CANOE CLIP	
23	3042-01	WIRE TIE, PANEL MOUNT	
24	3295-03	RIVET, STEEL, 1/8" PLATED	
25	20613	LABEL SHEET, LOCATION	NOT SHOWN
26	20614	LABEL SHEET, PRICE	NOT SHOWN

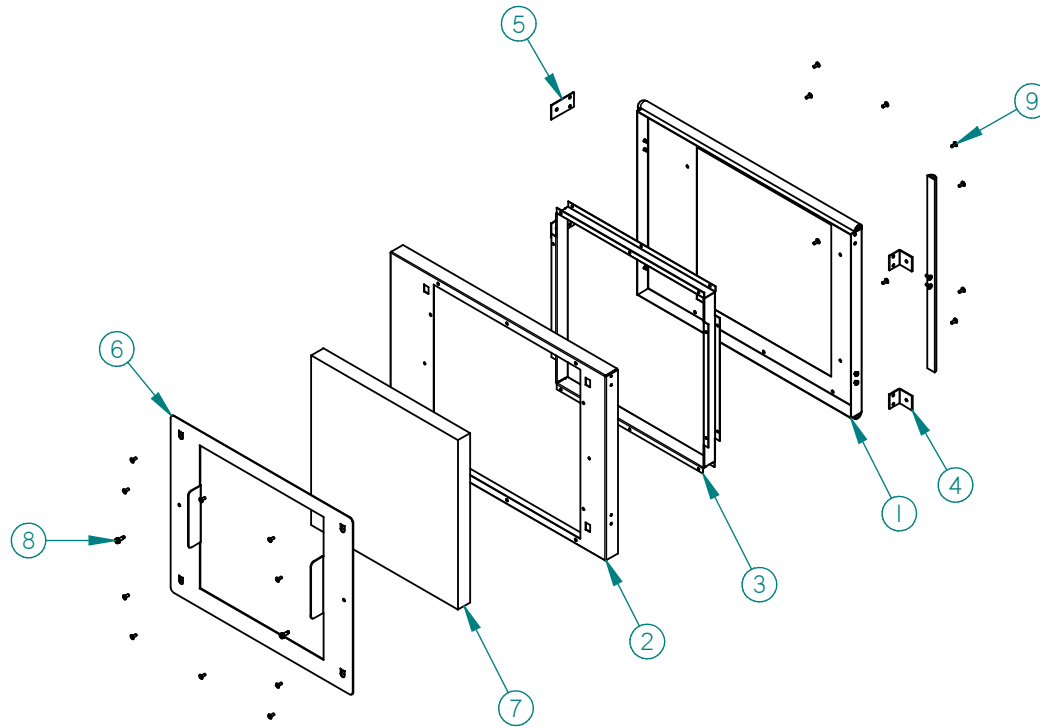
SCROLLING PRICE TRAY ILLUSTRATION



SCROLLING PRICE TRAY PARTS LIST

ITEM	PART NO.	PART DESCRIPTION	NOTE
1	23292	LABEL, ADHESIVE, LOCATION, RECTANGLE	
2	23321	SCROLL, PRICE LABEL, .00-.95 WITH DECIMAL	
3	23322	SCROLL, PRICE LABEL, 1-20	
4	23791	COVER, SCROLLING PRICES, 10 SELECT	
5	23984	STIFFENER, SCROLLING PRICES, 8 SELECT, 35"	
6	23985	COVER, TRAY STIFFENER, SCROLLING PRICES, 8 SELECT 35"	
7	23986	GUIDE, SCROLLING PRICES, 8 SELECT, 35"	
8	24046-02	KIT, MINI-DISPENSER	OPTIONAL (NOT SHOWN)

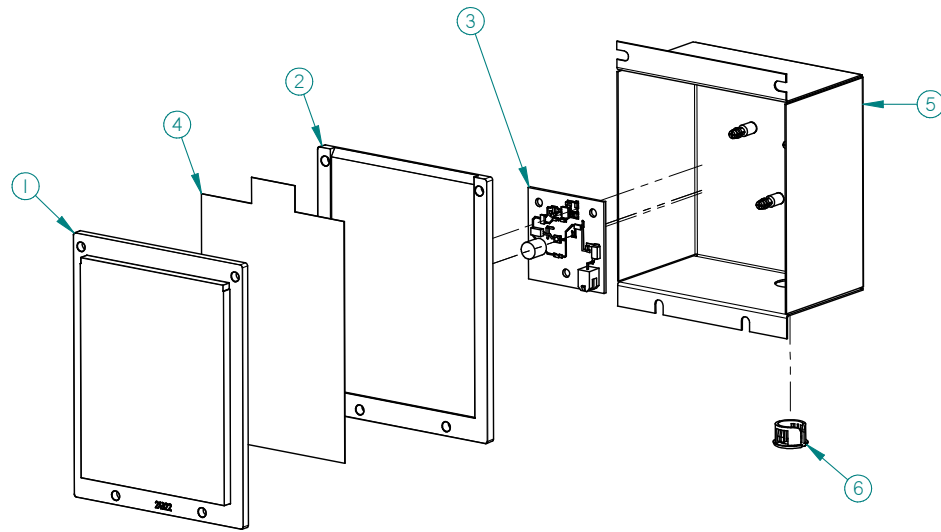
**CONDENSER FILTER COVER ILLUSTRATION**



CHILLER COVER PARTS LIST

ITEM	PART NO.	PART DESCRIPTION	NOTE
1	22670	CHILLER COVER, BACK PANEL	
2	22671	CHILLER COVER, FRONT PANEL	
3	22675	FRAME, FILTER, CHILLER COVER	
4	22676	BRACKET, CHILLER COVER	
5	22676-01	BRACKET, CHILLER COVER	
6	22678	COVER, FILTER, CHILLER	
7	24195	FILTER, RIDGED POLYESTER	
8	3000	SCREW, SHEET METAL TEK – 8-18	
9	3295-03	RIVET, STEEL, 1/8", PLATED	

POS DISPLAY ILLUSTRATION

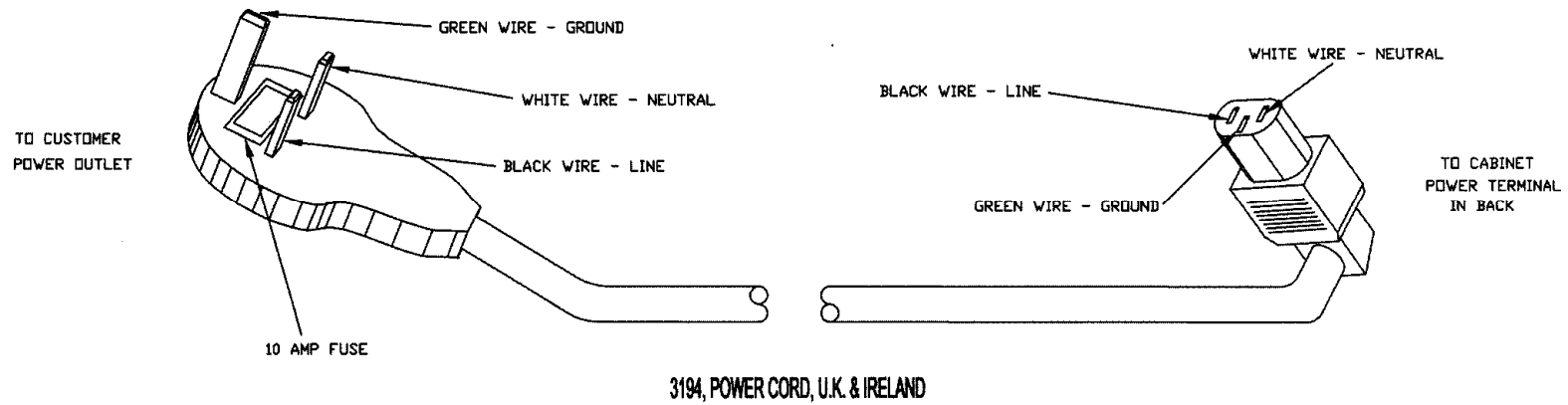
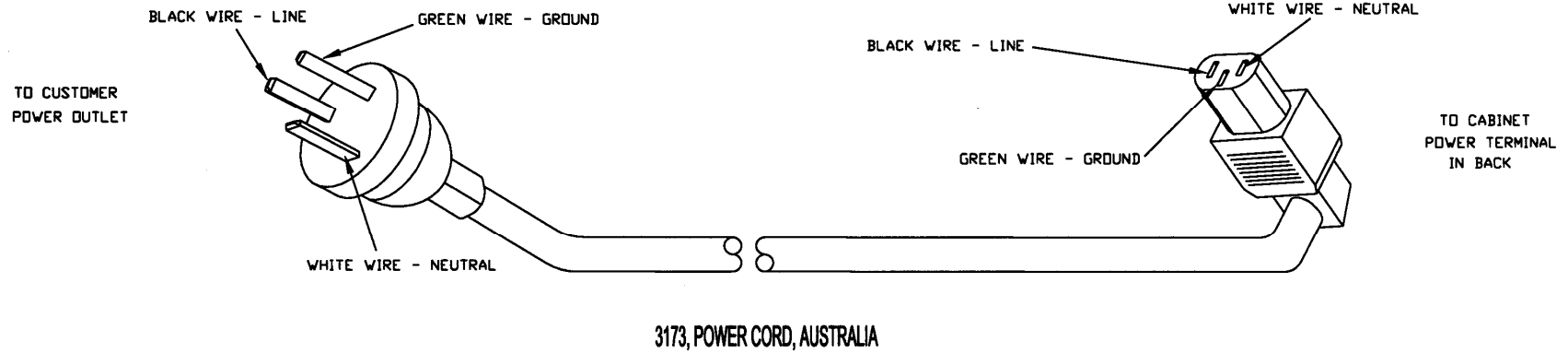
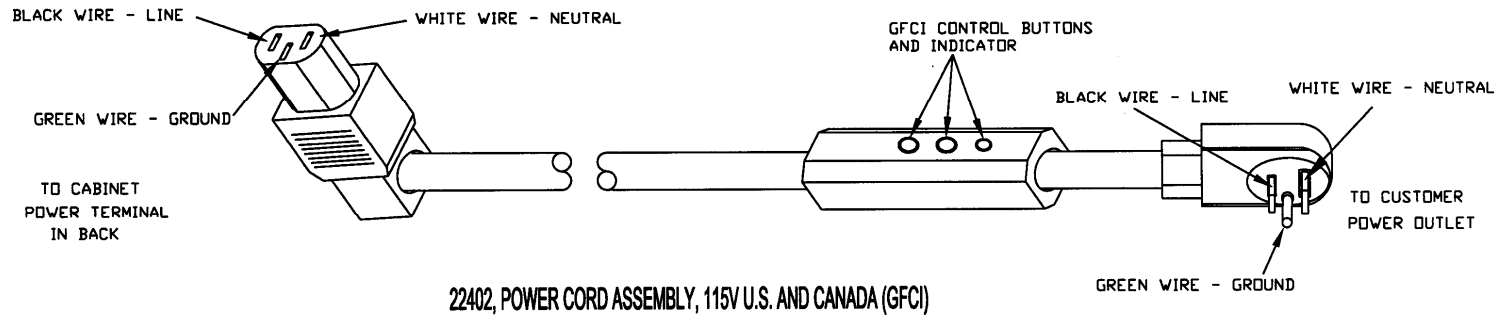


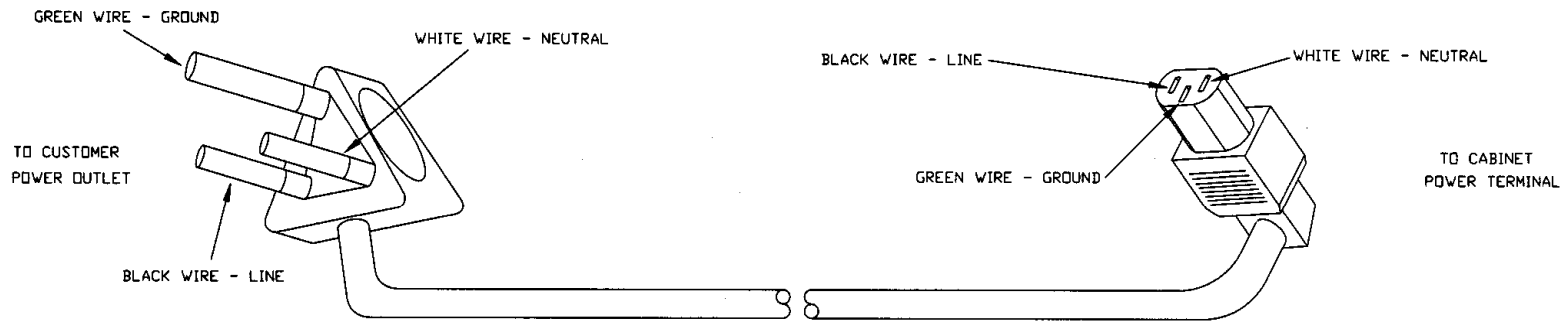


POS DISPLAY PARTS LIST

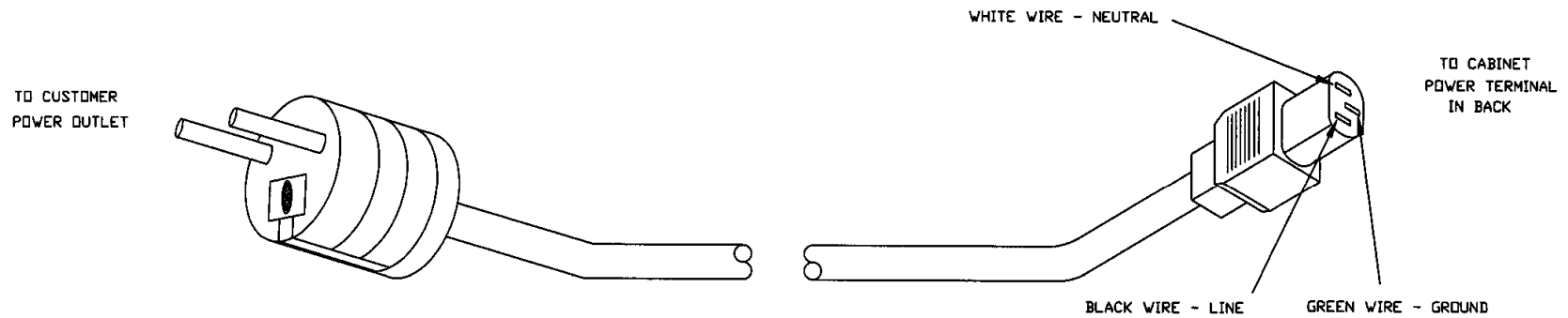
ITEM	PART NO.	PART DESCRIPTION	NOTE
1	24322	POS DISPLAY INSERT	
2	24323	POS DISPLAY DIFFUSER	
3	24329	LED BOARD	
4	24330	POS DISPLAY CARD (AMS)	ENGLISH
	24457	POS DISPLAY CARD (IAMS)	SPANISH
5	24339	LIGHT BOX ASSEMBLY	
6	3029-02	BUSHING	

### ELECTRICAL HARNESS ILLUSTRATIONS

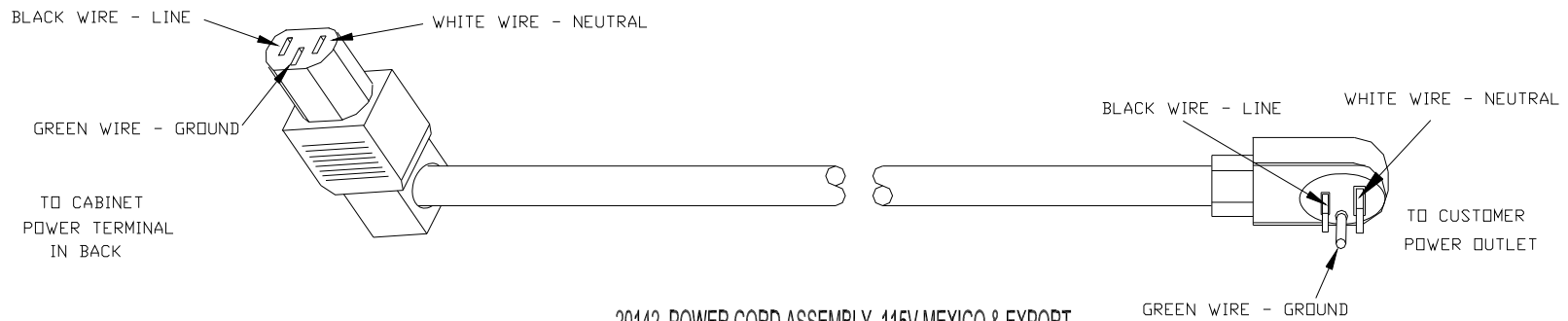




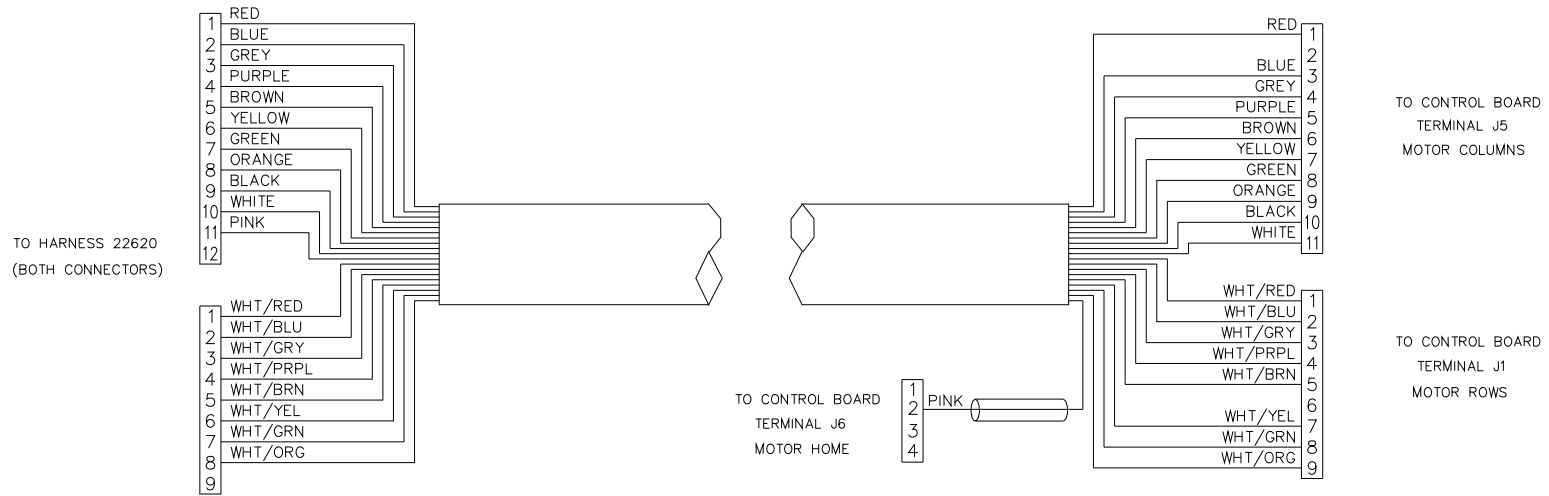
3208 POWER CORD, INDIA AND SOUTH AFRICA



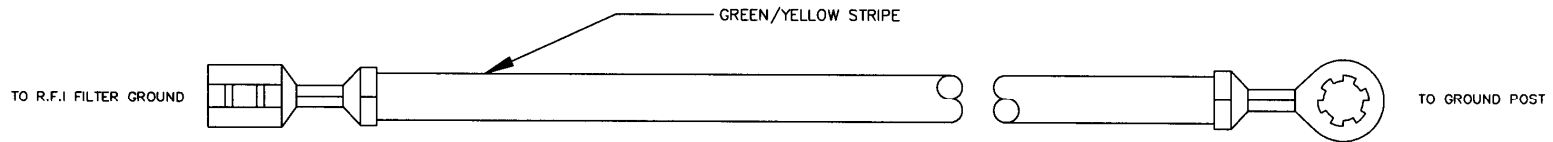
3193, POWER CORD, CONTINENTAL EUROPE



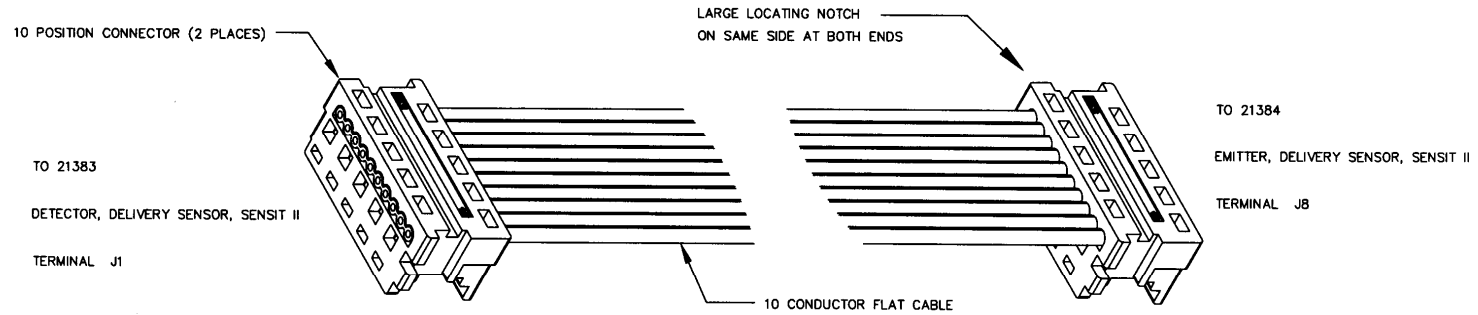
20142, POWER CORD ASSEMBLY, 115V MEXICO & EXPORT



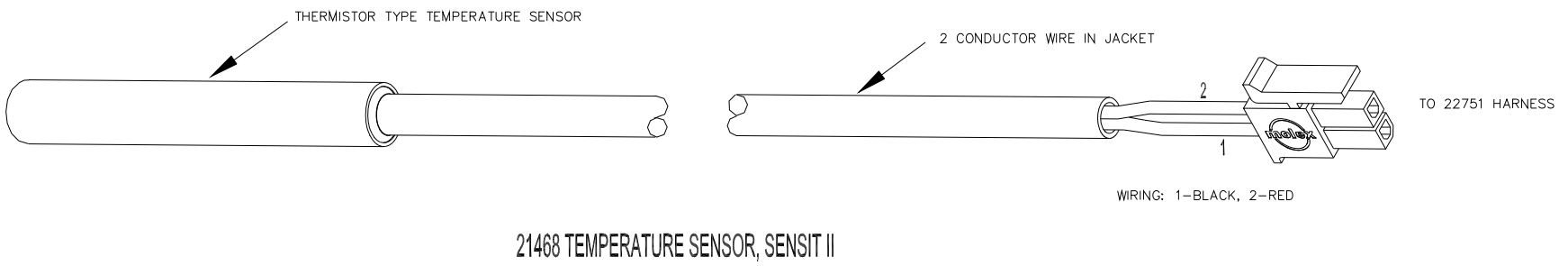
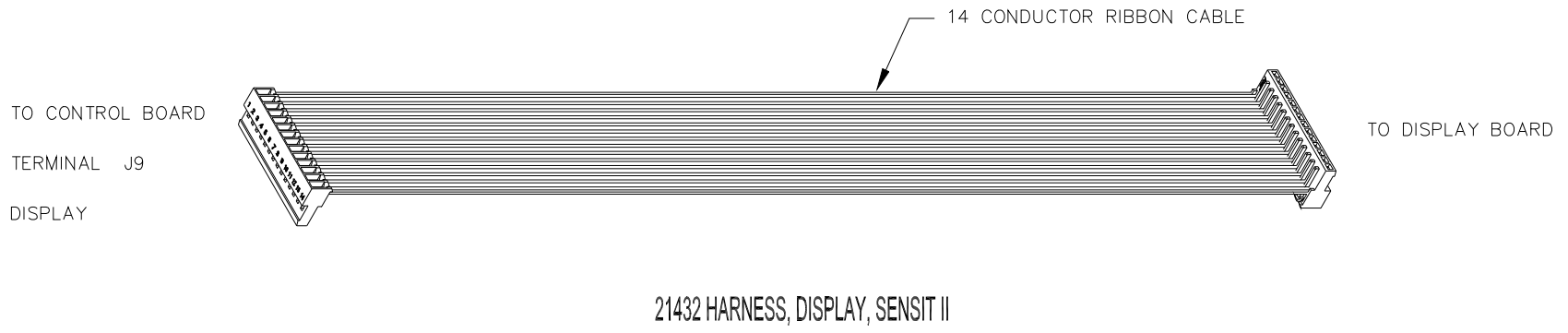
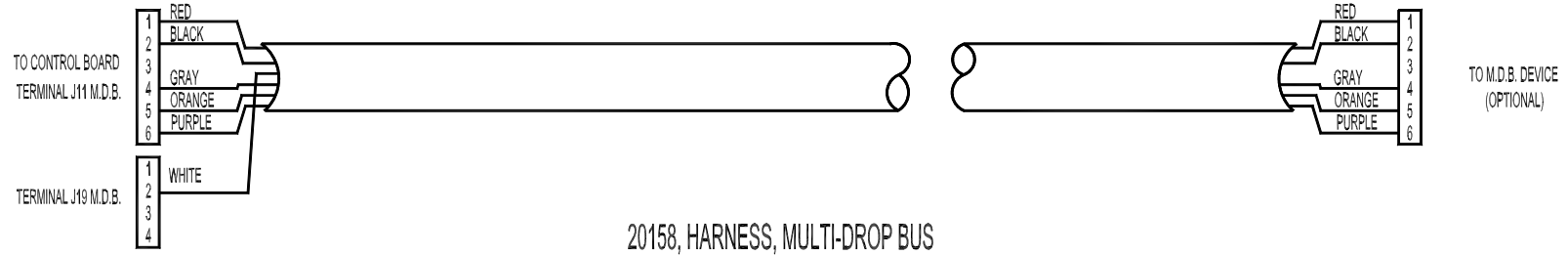
20146, HARNESS, DOOR MOTORS

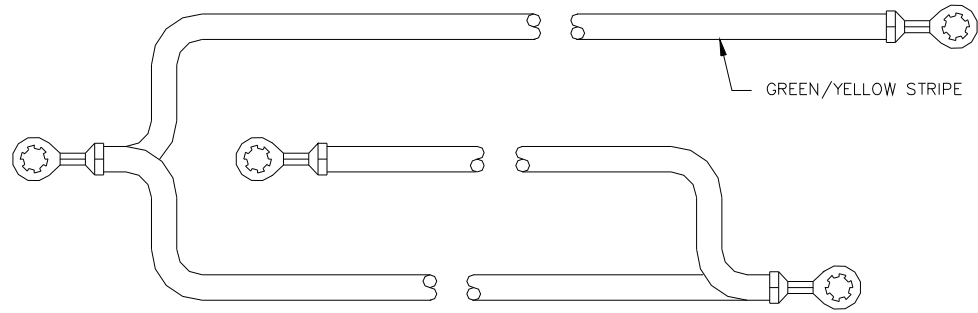


20154, HARNESS, R.F.I. FILTER GROUND

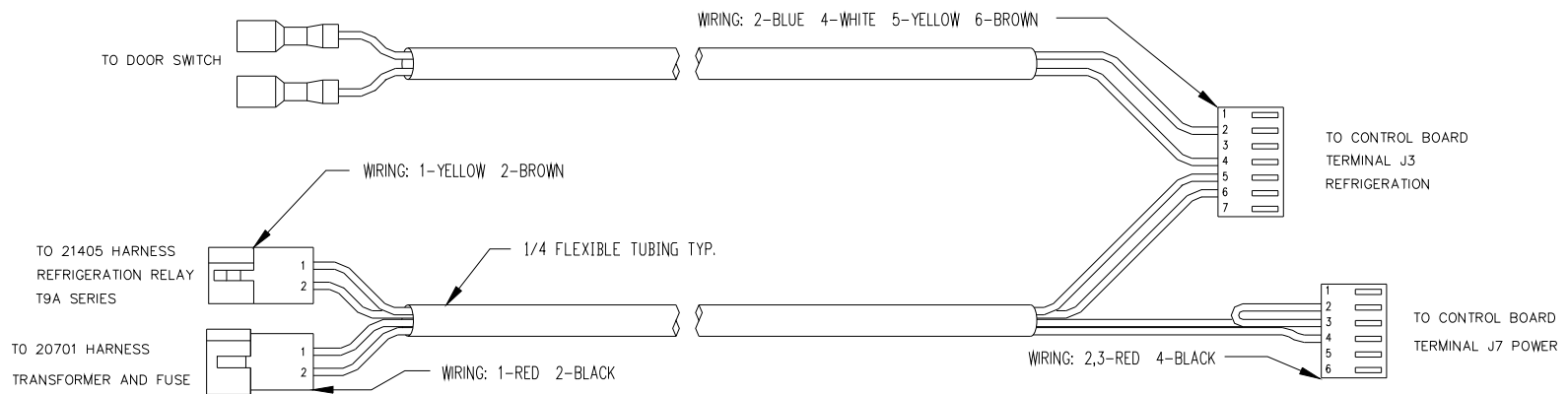


21426 HARNESS, DELIVERY SENSOR DETECTOR/EMITTER, SENSIT II

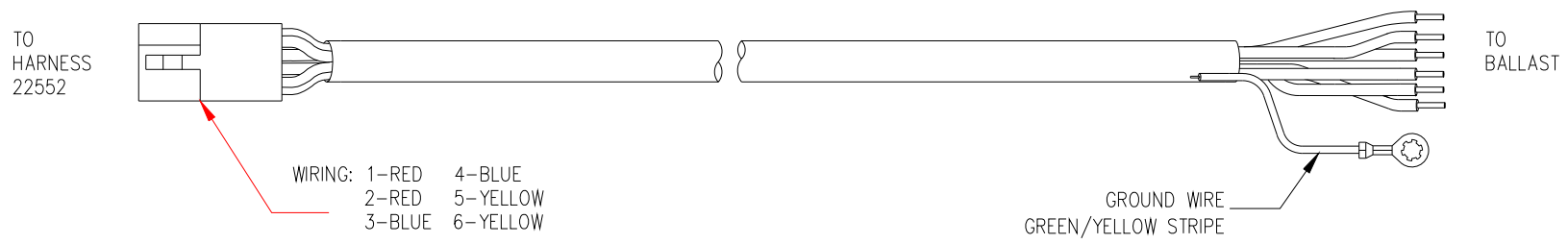
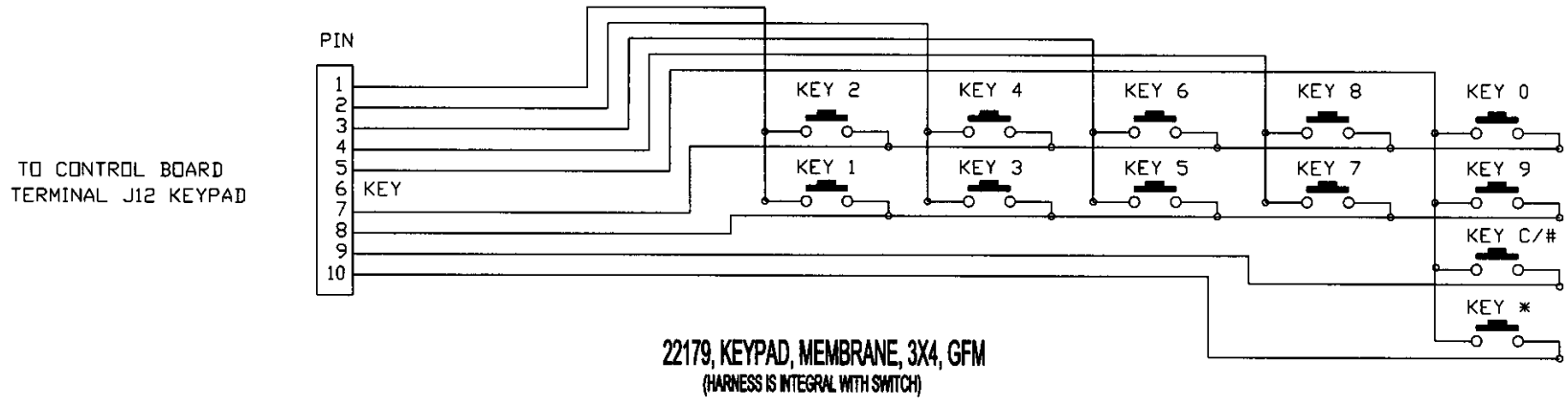




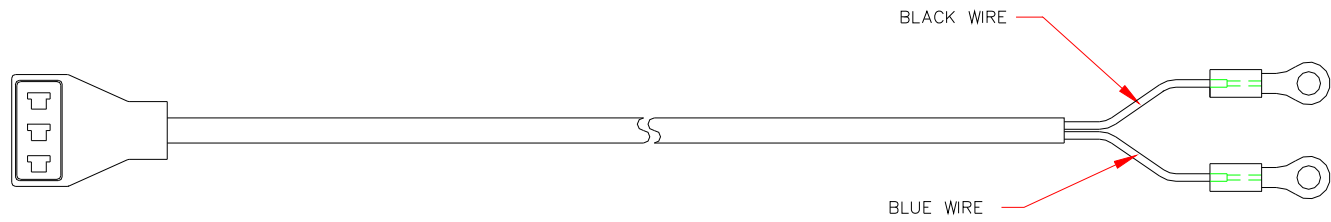
21978 HARNESS, GROUND, EMITTER/DETECTOR



21591, HARNESS, CONTROL POWER AND REFRIGERATION RELAY, LEFT SIDE DOOR SWITCH, SENSIT II



22619 HARNESS, BALLAST TO DUAL LAMP HARNESS

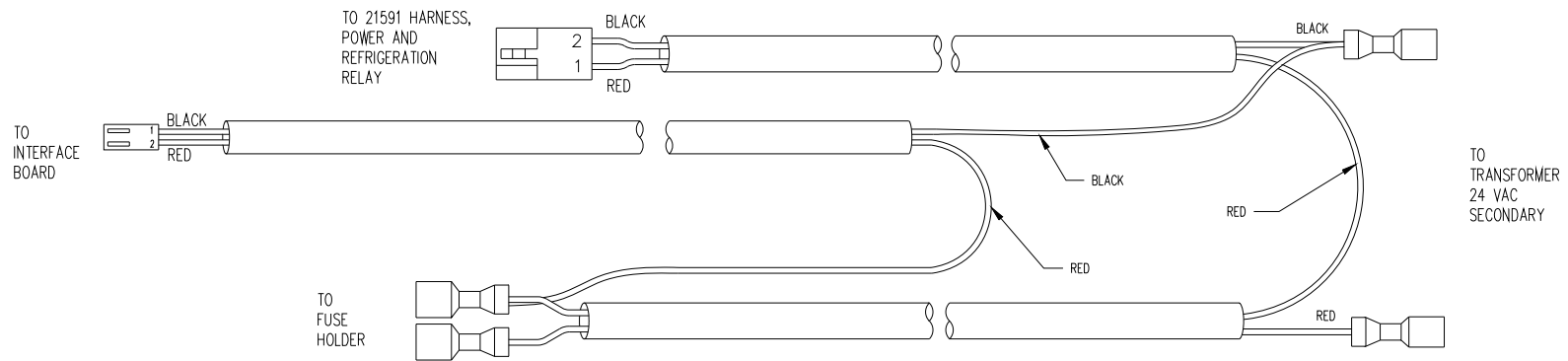


22470 HARNESS, CONDENSER FAN, EBM (EBM ONLY)

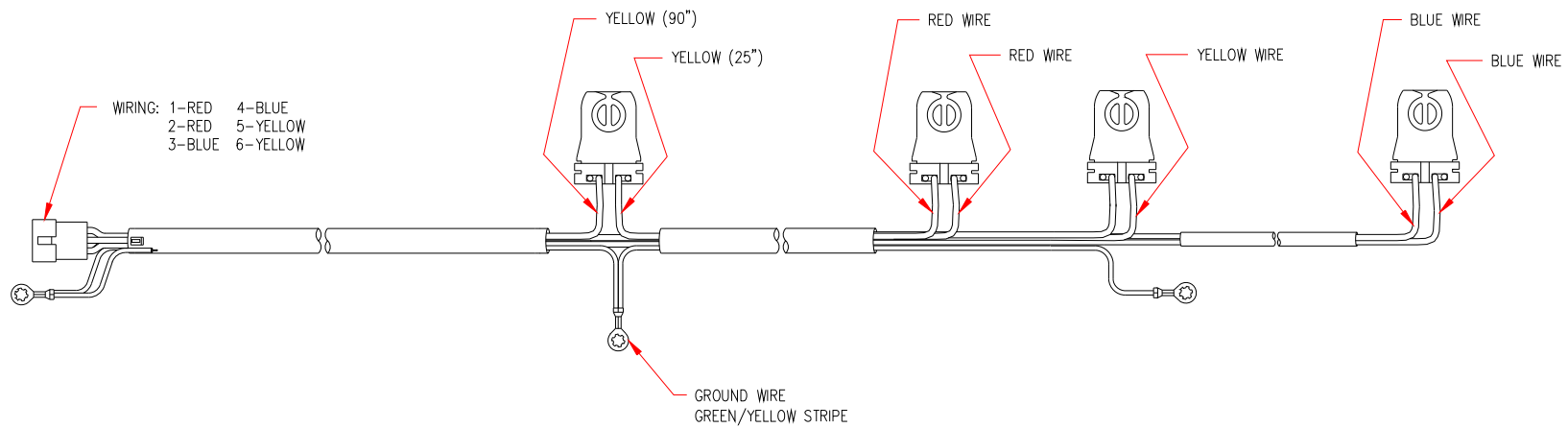


23267 HARNESS, CONDENSER FAN EXTENSION, FFV (WELLINGTON ONLY)

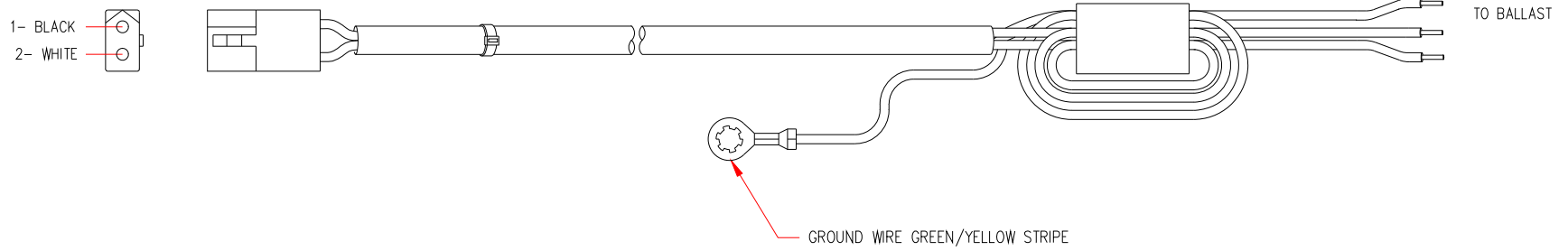




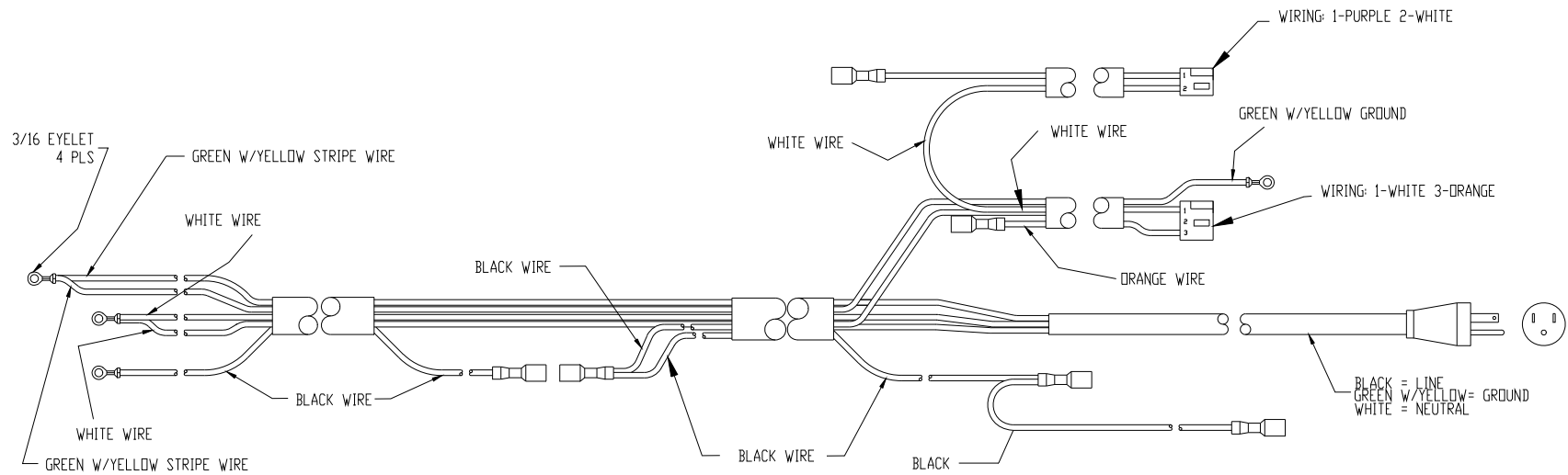
22605 HARNESS, TRANSFORMER AND FUSE, FFV



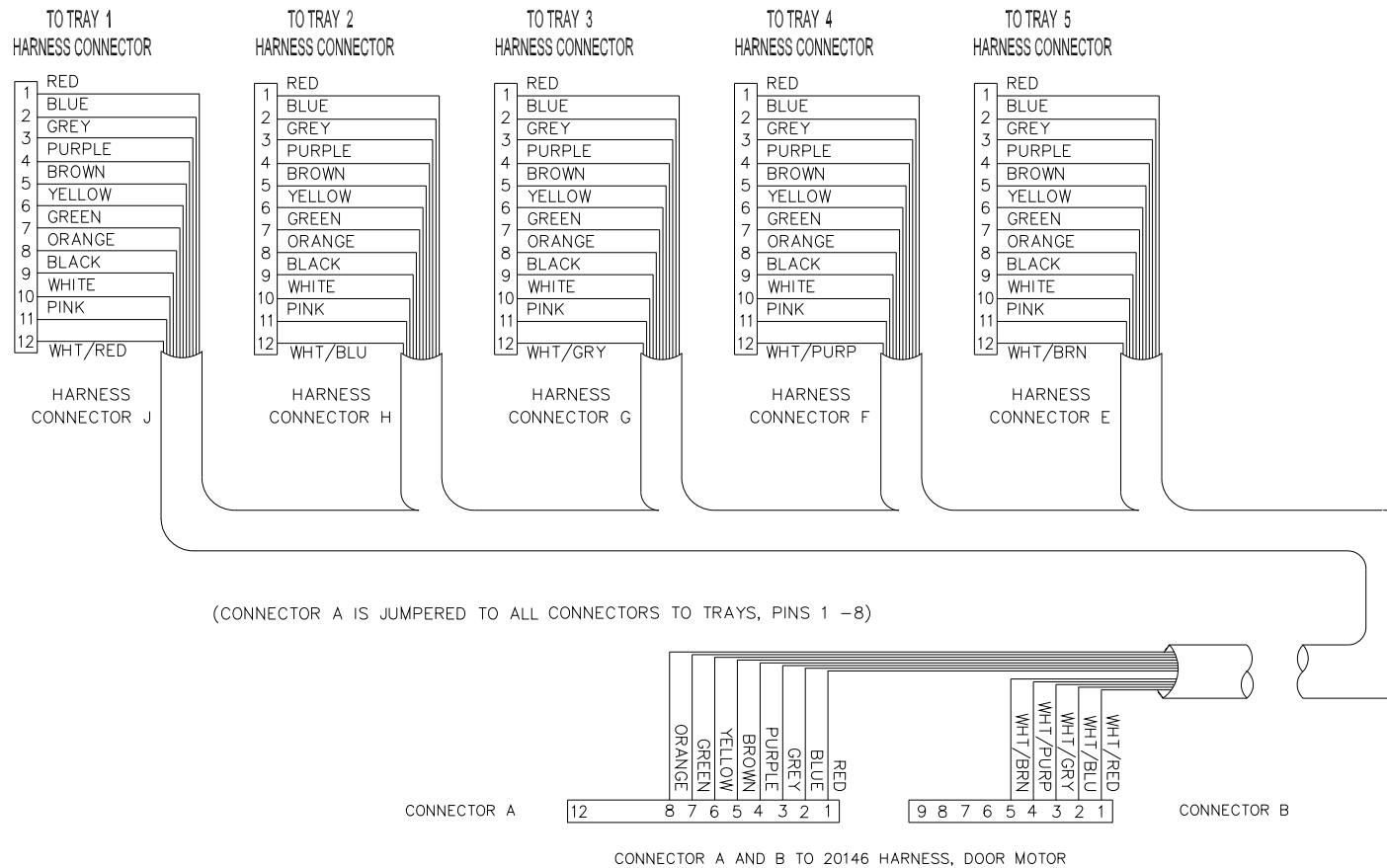
22552 HARNESS, DUAL LAMP, T5, FFV



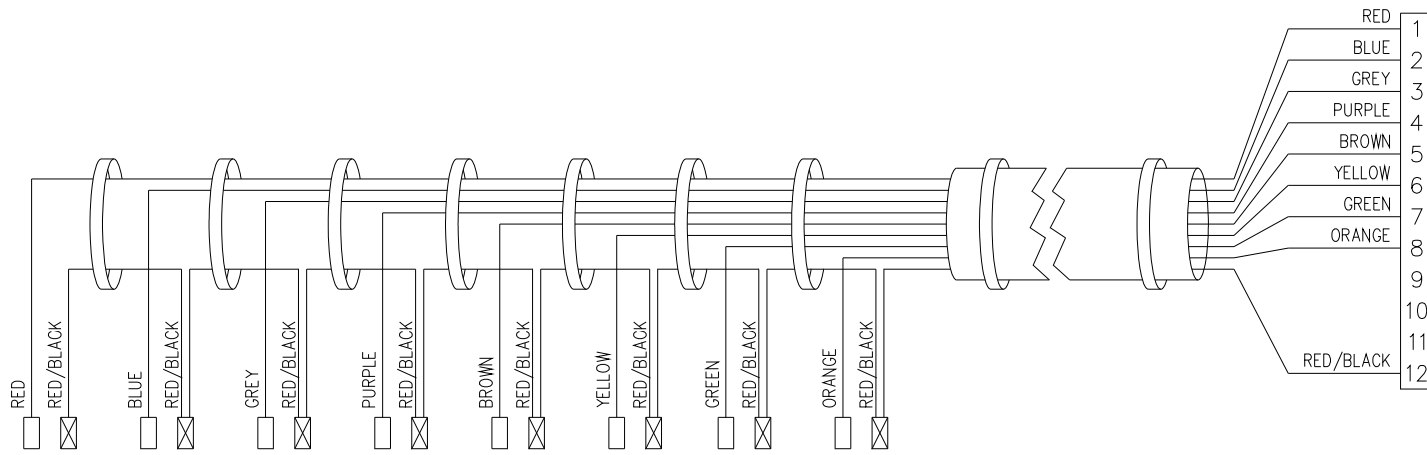
22604, HARNESS, BALLAST, POWER W/ GROUND, FFV



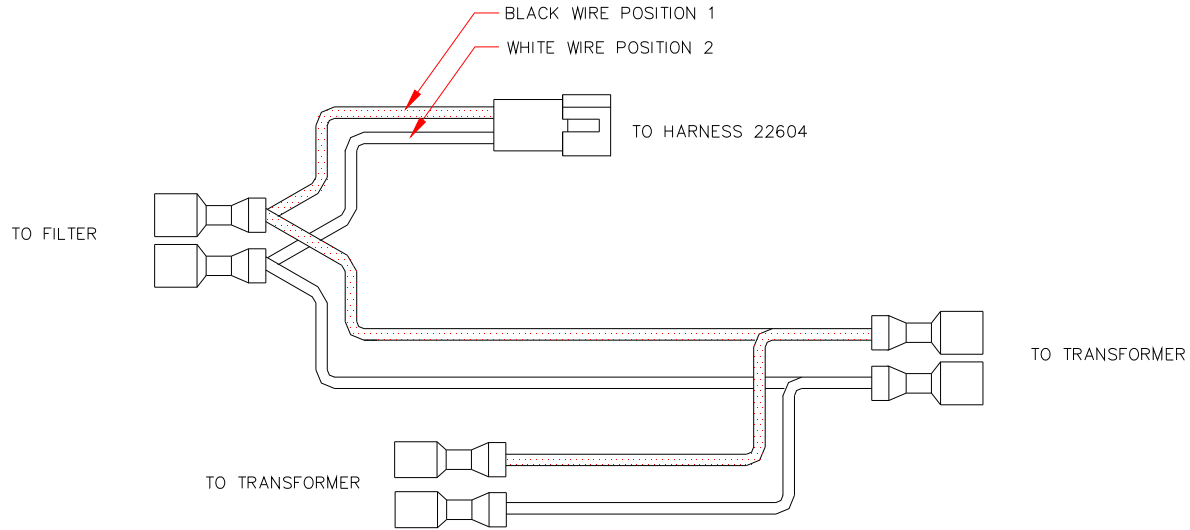
22610 HARNESS, REFRIGERATION, FFV



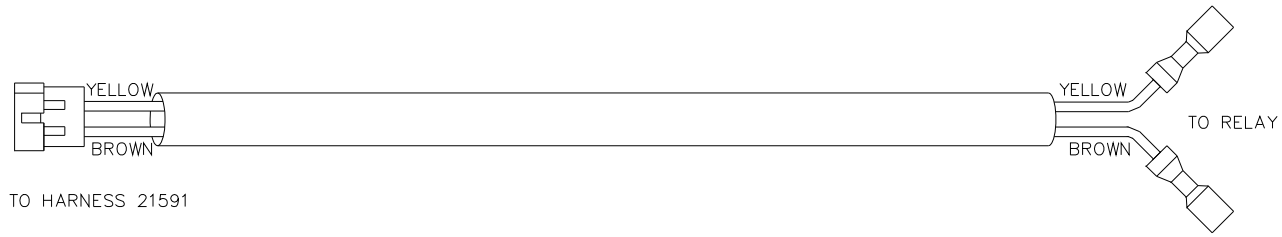
22620, HARNESS, MOTOR DISTRIBUTION



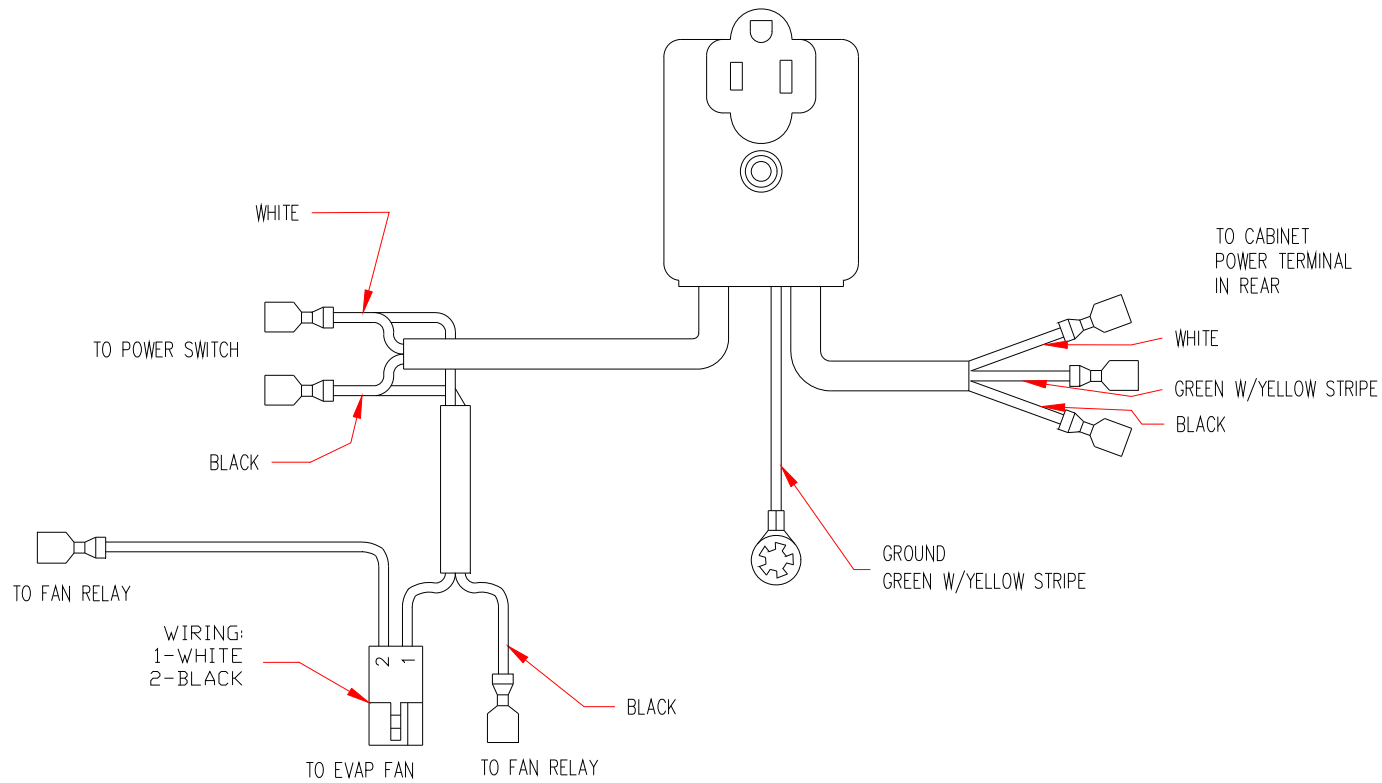
22621 HARNESS, TRAY, 8 COLUMN, FFV



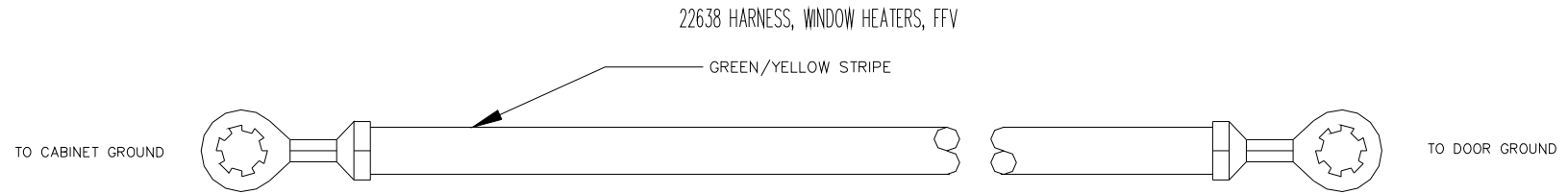
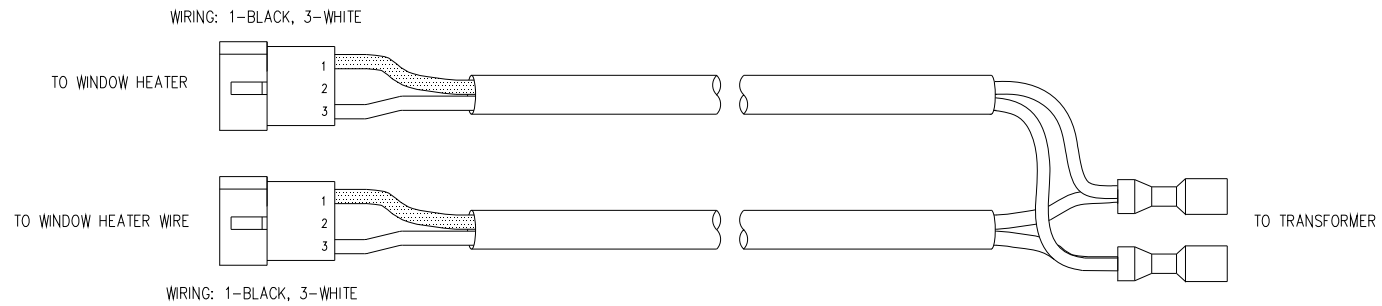
22629 HARNESS, DUAL TRANSFORMER, FFV



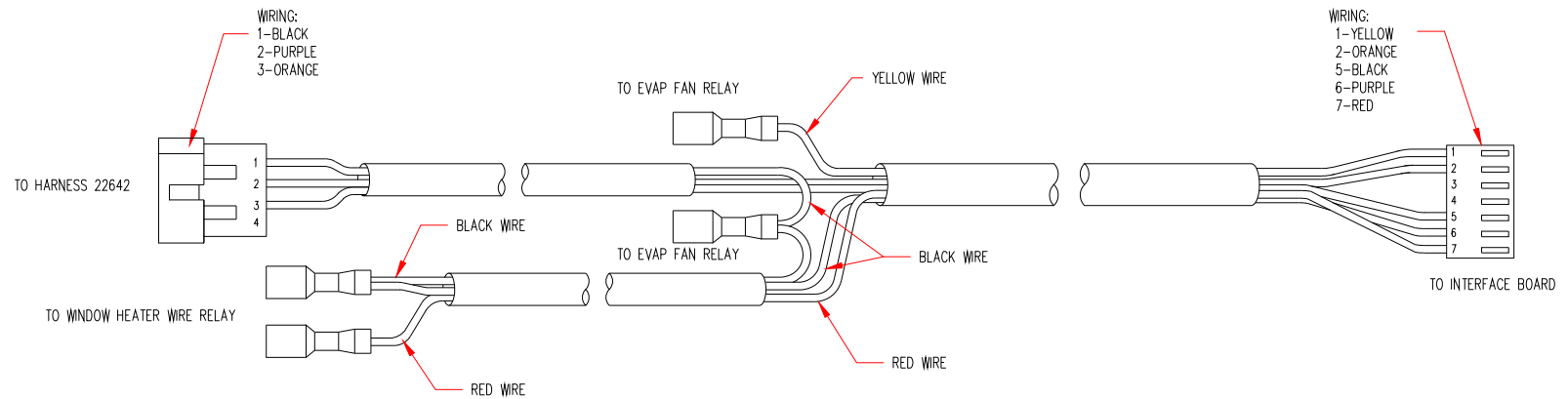
22637 HARNESS, REFRIGERATION RELAY



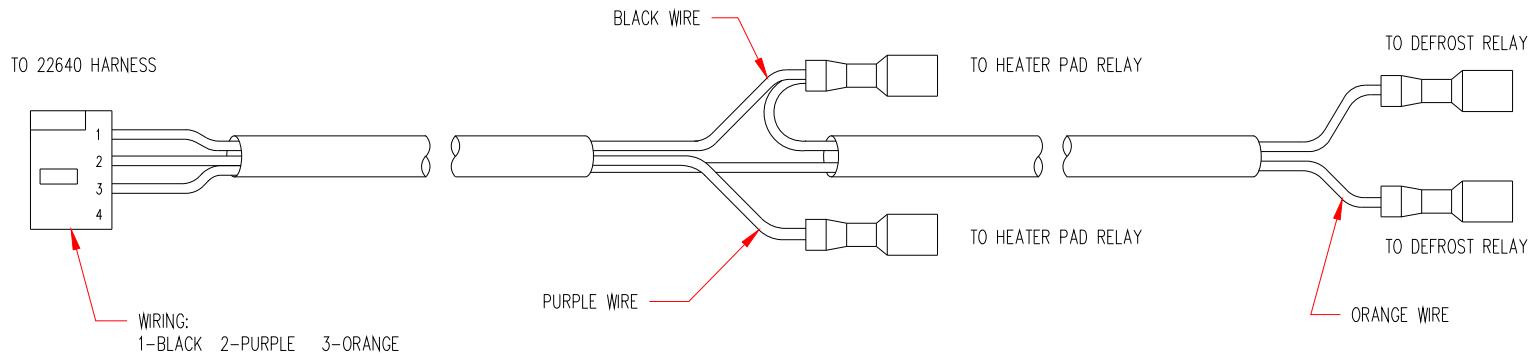
22633 HARNESS, POWER DISTRIBUTION,  
INTEGRAL SOCKET, ON/OFF SWITCH, FFV



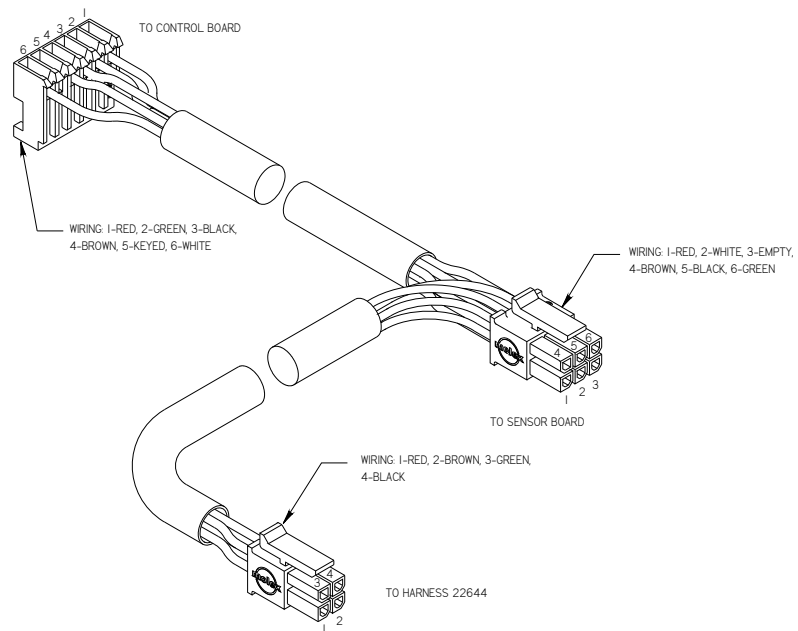
20156-01, HARNESS, GROUND



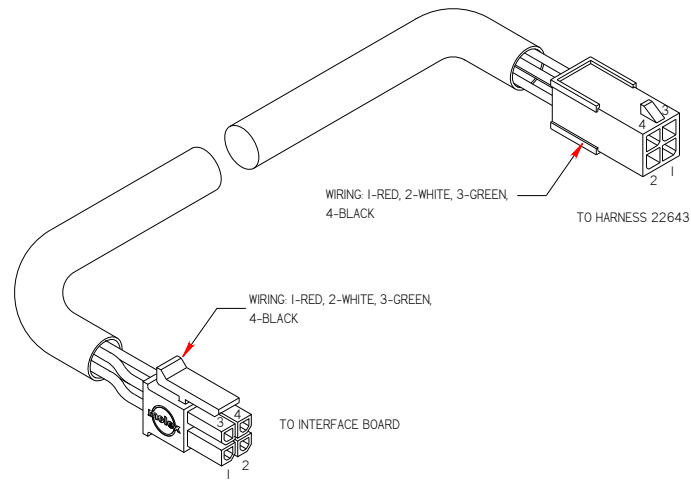
22640 HARNESS, EVAPORATOR, DEFROST, RELAYS



22642 HARNESS, DEFROST AND HEATER PAD RELAYS



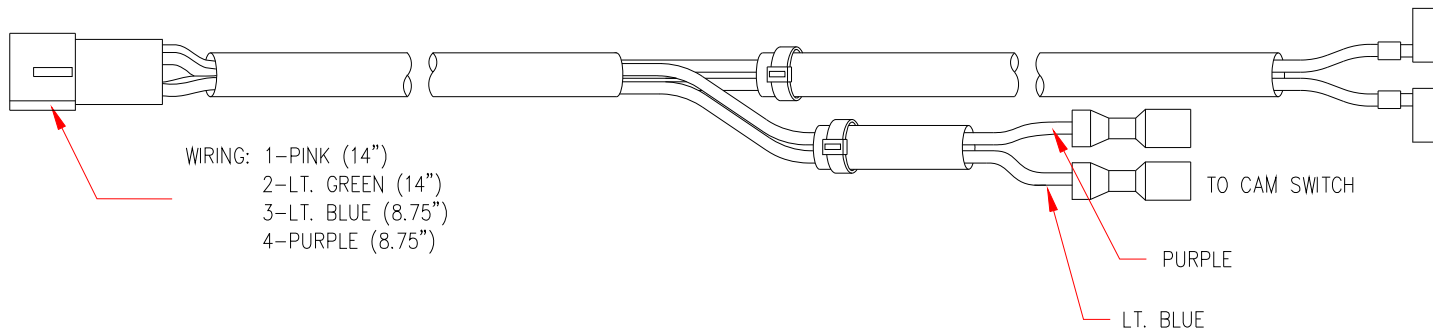
22643 HARNESS, DELIVERY SENSOR DETECTOR-  
EMITTER/INTERFACE BOARD



22644 HARNESS, INTERFACE BOARD, VMC LINK, FFV

TO 22694 HARNESS

TO SLIDING DOOR MOTOR

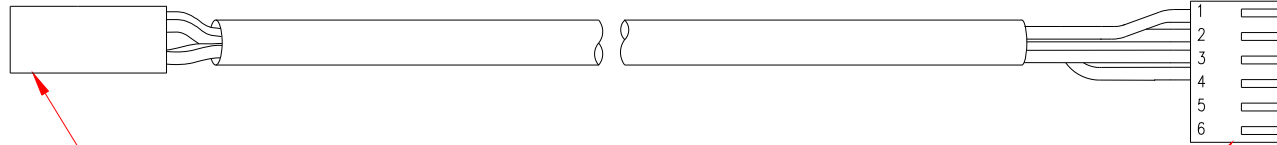


22695 HARNESS, SLIDING DOOR MOTOR



TO 22695 HARNESS

TO INTERFACE BOARD

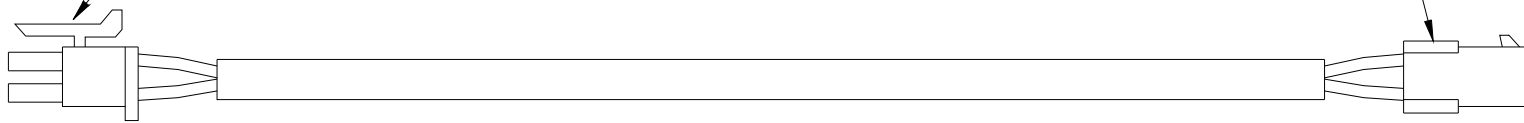


WIRING: 1-PINK  
2-LT. GREEN  
3-LT. BLUE  
4-PURPLE

WIRING:  
1-PINK  
2-LT. GREEN  
3-LT. BLUE  
4-PURPLE

22694 HARNESS, SLIDING DOOR MOTOR TO CONTROL BOARD

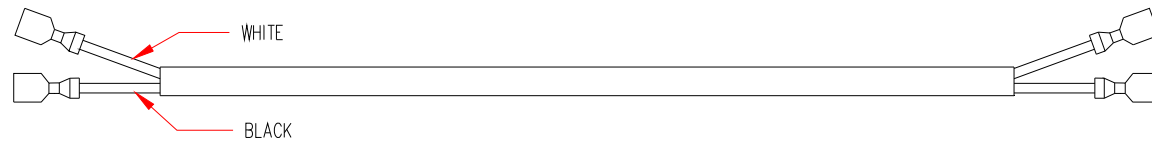
WIRING: 1-BLACK, 2-RED



TO SENSOR BOARD

TO 21468 TEMP SENSOR

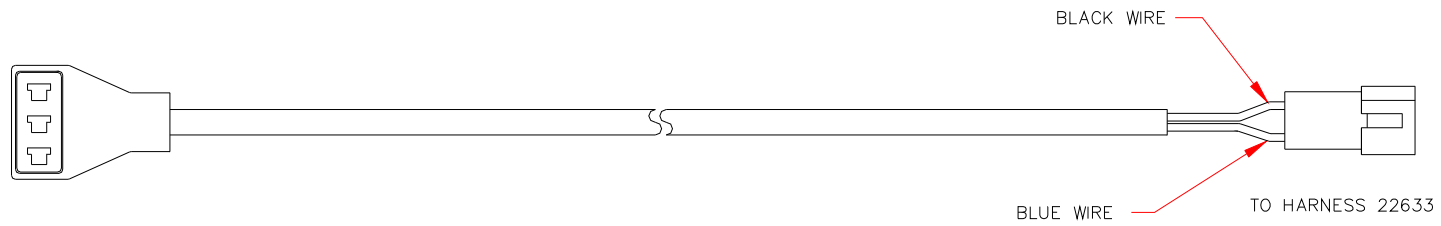
22751 HARNESS, TEMPERATURE SENSOR EXTENSION



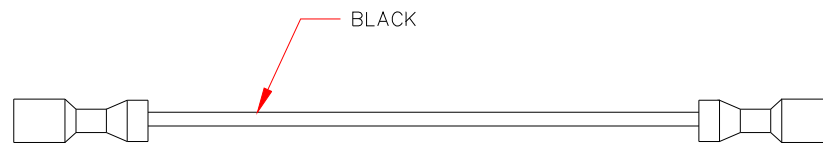
TO POWER SWITCH

23001 HARNESS, ON/OFF SWITCH

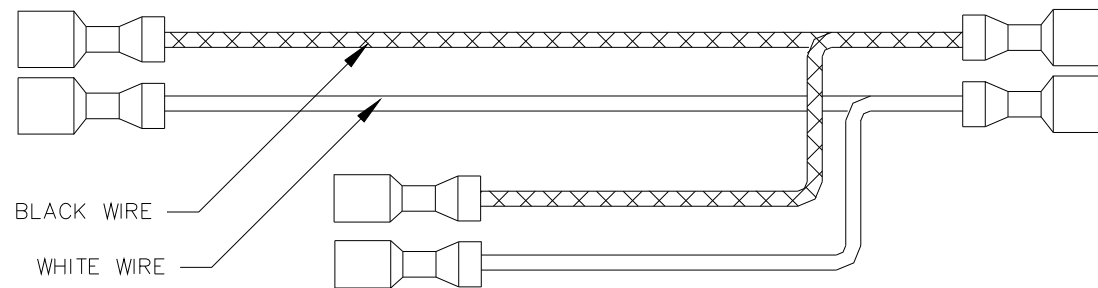
TO FILTER



23406 HARNESS, FAN, FFV (EBM ONLY)



23559 HARNESS, TRANSFORMER JUMPER, FFV



23665 HARNESS, DUAL TRANSFORMER, LED LIGHTS

HARNESS PARTS LIST

PART NO.	PART DESCRIPTION	NOTES
22402	POWER CORD ASSEMBLY, 115V U.S. AND CANADA	
3173	POWER CORD, AUSTRALIA	
3193	POWER CORD, CONTINENTAL EUROPE	
3194	POWER CORD, U.K. AND IRELAND	
3208	POWER CORD, INDIA AND SOUTH AFRICA	
20142	POWER CORD ASSEMBLY, 115V MEXICO & EXPORT	
20146	HARNESS, DOOR MOTORS	
20154	HARNESS, R.F.I. FILTER GROUND	
20156	HARNESS, GROUND	
20158	HARNESS, MULTI-DROP BUS	
21426	HARNESS DELIVERY SENSOR DETECTOR/ EMITTER	
21432	HARNESS, DISPLAY	
21468	TEMPERATURE SENSOR	
21591	HARNESS, CONTROL POWER AND REFRIGERATION RELAY	
21978	HARNESS, GROUND, EMITTER/DETECTOR	
22179	KEYPAD, MEMBRANE	
22470	HARNESS, CONDENSER FAN	EBM FANS ONLY
22552	HARNESS, DUAL LAMP	OPTIONAL ITEM
22604	HARNESS, BALLAST	OPTIONAL ITEM
22605	HARNESS, TRANSFORMER AND FUSE	
22610	HARNESS, REFRIGERATION	
22619	HARNESS, BALLAST TO DUAL LAMP	
22620	HARNESS, MOTOR DISTRIBUTION	
22621	HARNESS, TRAY, 8 COLUMN	
22629	HARNESS, DUAL TRANSFORMER	
22633	HARNESS, POWER DISTRIBUTION INTEGRAL SOCKET	
22637	HARNESS, REFRIGERATION RELAY	
22638	HARNESS, WINDOW HEATER	
22640	HARNESS, EVAPORATOR, DEFROST, RELAYS	
22642	HARNESS, DEFROST AND HEATER PAD RELAYS	
22643	HARNESS, DELIVERY SENSOR DETECTOR EMITTER	
22644	HARNESS, INTERFACE BOARD, VMC LINK	
22694	HARNESS, SLIDING DOOR MOTOR TO CONTROL BOARD	

---

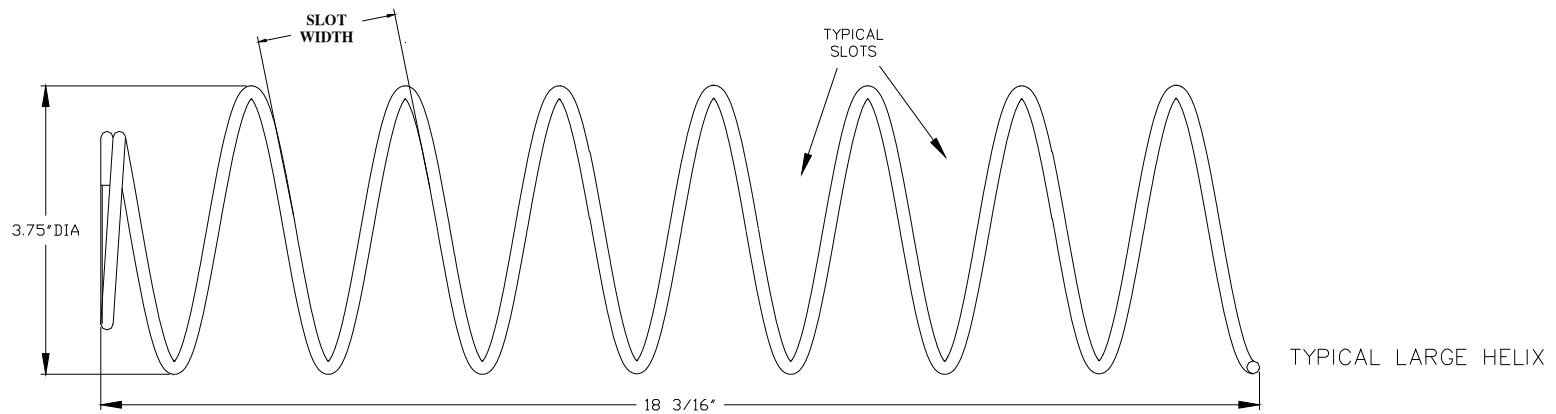
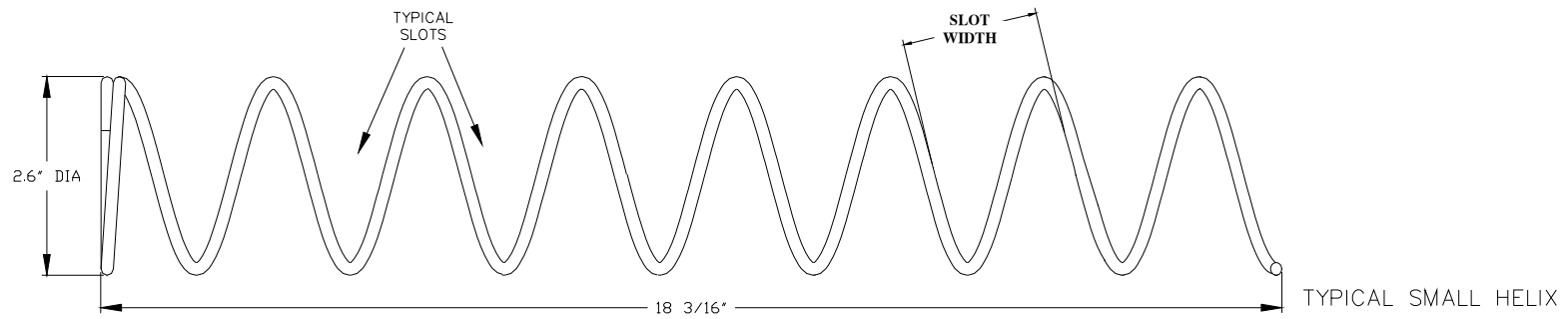
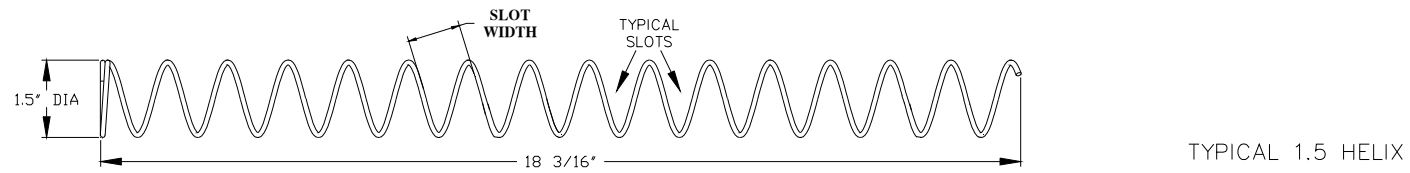
22695	HARNESS, SLIDING DOOR MOTOR	
22751	HARNESS, TEMPERATURE SENSOR EXTENSION	
23001	HARNESS, ON/OFF SWITCH	
23267	HARNESS, CONDENSER FAN EXTENSION, FFV	WELLINGTON FANS ONLY
23406	HARNESS, FAN	EBM FANS ONLY
23559	HARNESS, TRANSFORMER JUMPER	
23665	HARNESS, DUAL TRANSFORMER	

---

---

THIS PAGE INTENTIONALLY LEFT BLANK

### HELIX ILLUSTRATIONS



### HELIX PARTS LIST

PART NO.	HELIX DESCRIPTION	VEND OPENING (PITCH)	NUMBER OF VEND OPENINGS	HELIX OUTSIDE DIAMETER	TURNS	QTY PER COLUMN	NOTE
24060-08	Helix, 1.5", CCW, Black	2.03	8	1.5	CCW	1	Use With Mini-Dispenser Kit 24046-02
24060-15	Helix, 1.5", CCW, Black	1.12	15	1.5	CCW	1	Use With Mini-Dispenser Kit 24046-02
24060-25	Helix, 1.5", CCW, Black	.69	25	1.5	CCW	1	Use With Mini-Dispenser Kit 24046-02
22520-03	Helix, 2.6", CW, Black	4.20	3	2.6	CW	1 Set	Use With 22519-03 To Couple Motors
22520-04	Helix, 2.6", CW, Black	3.56	4	2.6	CW	1 Set	Use With 22519-04 To Couple Motors
22520-05	Helix, 2.6", CW, Black	3.06	5	2.6	CW	1 Set	Use With 22519-05 To Couple Motors
22520-06	Helix, 2.6", CW, Black	2.67	6	2.6	CW	1 Set	Use With 22519-06 To Couple Motors
22520-07	Helix, 2.6", CW, Black	2.41	7	2.6	CW	1 Set	Use With 22519-07 To Couple Motors
22520-09	Helix, 2.6", CW, Black	1.82	9	2.6	CW	1 Set	Use With 22519-09 To Couple Motors
22520-11	Helix, 2.6", CW, Black	1.46	11	2.6	CW	1 Set	Use With 22519-11 To Couple Motors
22520-14	Helix, 2.6", CW, Black	1.21	14	2.6	CW	1 Set	Use With 22519-14 To Couple Motors
22520-18	Helix, 2.6", CW, Black	.91	18	2.6	CW	1 Set	Use With 22519-18 To Couple Motors
22519-03	Helix, 2.6", CCW, Black	4.20	3	2.6	CCW	1	
22519-04	Helix, 2.6", CCW, Black	3.56	4	2.6	CCW	1	
22519-05	Helix, 2.6", CCW, Black	3.06	5	2.6	CCW	1	
22519-06	Helix, 2.6", CCW, Black	2.67	6	2.6	CCW	1	
22519-07	Helix, 2.6", CCW, Black	2.41	7	2.6	CCW	1	
22519-09	Helix, 2.6", CCW, Black	1.82	9	2.6	CCW	1	
22519-11	Helix, 2.6", CCW, Black	1.46	11	2.6	CCW	1	
22519-14	Helix, 2.6", CCW, Black	1.21	14	2.6	CCW	1	
22519-18	Helix, 2.6", CCW, Black	.91	18	2.6	CCW	1	
22518-03	Helix, 3.75", CCW, Black	4.26	3	3.75	CCW	1	
22518-04	Helix, 3.75", CCW, Black	3.61	4	3.75	CCW	1	
22518-05	Helix, 3.75", CCW, Black	2.74	5	3.75	CCW	1	
22518-07	Helix, 3.75", CCW, Black	2.21	7	3.75	CCW	1	
22518-08	Helix, 3.75", CCW, Black	2.01	8	3.75	CCW	1	
22518-09	Helix, 3.75", CCW, Black	1.71	9	3.75	CCW	1	
22518-12	Helix, 3.75", CCW, Black	1.40	12	3.75	CCW	1	
22518-19	Helix, 3.75", CCW, Black	.90	19	3.75	CCW	1	